

STUDENT GUIDE

Hello!

2025-2026

"Welcome to this new academic year at the University of Bordeaux, where our commitment is to create an environment where students feel fully represented and supported in their academic and personal journey."

Mickaël Larivière,
Student Vice-President


Everything you need
to know about the University of Bordeaux
and the start of the academic year:

→ u-bordeaux.fr

 [universitedebordeaux](https://www.youtube.com/universitedebordeaux)

 [univbordeaux](https://www.facebook.com/univbordeaux)

 [ubordeaux](https://www.instagram.com/ubordeaux)

Cover and interior illustrations: Abwu
Abwu is a visual artist whose work explores local culture, self-discovery, and everyday poetry. Through illustration and design, she seeks to connect with communities and create visual narratives that are both thoughtful and inviting.  [find__a_place](https://twitter.com/find__a_place)

Others illustrations:
Anne-Cécile Tessier



SUMMARY

- > Once upon a time. 4
- > The higher education system. 6
- > Come to France. 8
- > Checklist - all you need to know to feel at home! 9
- > Quiz - Which type of student are you? 10

→ FIRST STEPS

- > Digital services for your success. 13
- > University libraries 14
- > Aquipass card, a student card and so much more 15
- > Student and campus life contribution (CVEC) 16

→ OUR GOAL: YOUR SUCCESS

- > Support for students with specific needs. 19
- > Applying for disabled worker status during your studies . 20
- > Social aid. 21
- > Healthcare 22
- > Student Health Centre. 23

→ BUILD YOUR PROJECT

- > From university to your 1st job 25
- > Join the university's community network 26
- > Press pause: your gap year awaits 27
- > ENLIGHT: Europe within reach of your studies 28
- > Language centres 29
- > Improve your French. 29
- > Student entrepreneur: yes, you can! 30
- > Try it out! 31

→ ENGAGE IN YOUR UNIVERSITY

- > Take action! 33
- > Democratic life. 35
- > Transitions: time for action. 36
- > So, what can you actually do 37
- > They make the heart of the campuses beat 38

→ HOW DOES IT GO DAY-TO-DAY?

- > Accommodation 41
- > Finance 43
- > Budget 44
- > Transport 45
- > Safety at the university 46
- > United against discriminations 47
- > What's for lunch? 48
- > Fighting food insecurity 49

→ BOOST YOUR LIFE

- > Culture(s) 51
- > Open to the world 53
- > Sport 55
- > Physical activity 56
- > Living on campus 58

→ GOT QUESTIONS? THEY'VE GOT ANSWERS!

- > At your arrival 61
- > Your must-haves 63
- > All your contacts 64
- > University restaurants 70
- > Practical information 71
- > Hoist the colours High! (the shop) 72

→ OUR CAMPUS & SITES ... 74

→ TAKE A BREAK 76

ONCE UPON A TIME

Our story begins in the year of grace 1441 in the Duchy of Aquitaine. Fast forward nearly 600 years, and the university exists as you know it today! But what exactly is the University of Bordeaux in the 21st century?

Old is gold

Sure, the University of Bordeaux should be a little over 580 years old, but in reality, it officially came into being as you know it on January 1st, 2014. Now it boasts training institutes and colleges:

- › Law, Political Science, Economics, and Management
- › Health Sciences
- › Human Sciences
- › Science and Technology
- › Graduate Research School
- › Bordeaux Institute of Technology
- › Institute of Education
- › Institute of Vine and Wine Science
- › Apprentices Training Centre

A multidisciplinary education hub

- › Nearly 245 national degrees, from vocational to doctoral level
- › 70 international programmes at Bachelor, Master, and Doctorate level

A hub of research excellence

The university isn't just about education; it's also a place that produces knowledge. Most of the teaching community are also researchers.

- › 11 research departments comprising 82 laboratories, institutes and technical platforms
- › Nearly 50 scientific disciplines

A global outlook

The university welcomes thousands of international students every year, allowing you to thrive in your studies alongside peers from European and non-European countries.

- › Nearly 700 partner universities in over 80 countries worldwide

Open and welcoming campuses

- > One of the largest campuses in Europe (187 hectares, including 140 hectares of green spaces)
- > Numerous local services on each site
- > Campus France "Bienvenue en France" (3 stars!) label for the quality of international student welcome



KEY FIGURES



+52 000 students



7 200 international students



8 doctoral schools



2 000 PhD students

One of the largest campuses in Europe !



28 hectares of sports facilities

3 200 faculty and researchers, including **800** international researchers



2 800 administrative staff serving students



1 university foundation



31 libraries with more than **5 000** seats



140 student associations

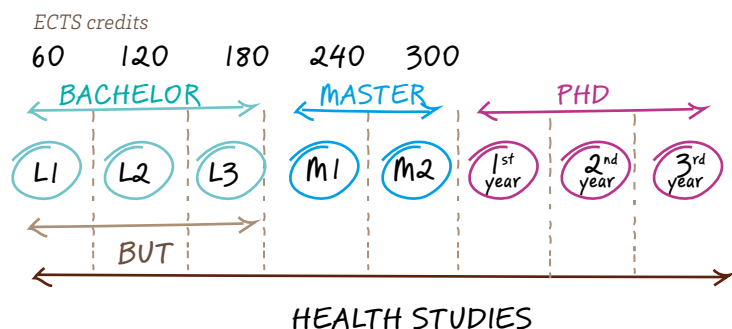


THE HIGHER EDUCATION SYSTEM

France boasts an internationally renowned and highly accessible system of higher education. Universities confer national degrees (Bachelor, Master, Doctorate) that deliver ECTS, recognised by many countries in the European Union and around the world.

European Credit Transfer system (ECTS)

Each level is attained by acquiring ECTS. The academic year is divided into two semesters, and the validation of one semester is equivalent to 30 ECTS. The accumulation of credits at the higher education level depends on academic workload, number of course hours and course objectives.



FIND OUT MORE

For more information about the French Higher Education System and coming to study in France, consult the Campus France website.

→ campusfrance.org/en

EXAMS

Learn about the methods for assessing knowledge and skills (M3C) and review the exam charter

→ u-bordeaux.fr/en/exams

Registration

Whether you are an international student within an exchange programme (or scholarship programme) or outside of an exchange programme, please visit our website to learn all about registration requirements:

- > level of education
- > level of French
- > on-line application
- > papers and documents you may need
- > etc.

→ u-bordeaux.fr/en/international_students

Tuition fees 2025/2026

What will you pay as a student of the University of Bordeaux if you wish to register for an undergraduate degree, Master programme or PhD?

- > You come from the European Union (EU), the European Education Area (EEA), Switzerland, Monaco or Québec (Canada): You pay the same fees* as French students.
- > You come from a country outside the regions indicated above: you can obtain a partial exoneration of the fees for the duration of your cursus and therefore pay the same fees* as a French student.
- > You come from a country not listed above and are unable to obtain an exemption: you have to pay different fees for an undergraduate programme (2895 €) or for a Master programme (3941 €)

→ u-bordeaux.fr/en/tuition-fees

** 178 € for an undergraduate programme, 254 € for a Master programme and 397 € for PhD studies.*

PLEASE NOTE

The quality of the student's academic record and/or the economic context of the country of origin will be taken into account when examining exemption requests, with priority given to those from low income and lower middle income countries.

You must also provide an expenditure statement for the CVEC (Student and Campus Life Contribution). The amount is fixed at 105 € (free for scholarship students).

COME TO FRANCE

Passport/ID document

All international students who wish to pass the French customs must have a valid passport. For EU citizens, an ID card is sufficient. Passports and ID documents must be valid for the duration of your stay.

Visa

EU citizens and those from countries within the Schengen area do not need a visa. If you are from outside this zone, you will need a long stay student visa when staying for over 3 months in France, to be obtained prior to your arrival. In this case, please contact the Consulate General of France nearest to you for further information on how to apply and obtain your visa.

Intra-European procedure

Students who have a resident permit from another EU country may, if part of a European programme or exchange, arrive and stay in France without requesting a visa or French resident permit.

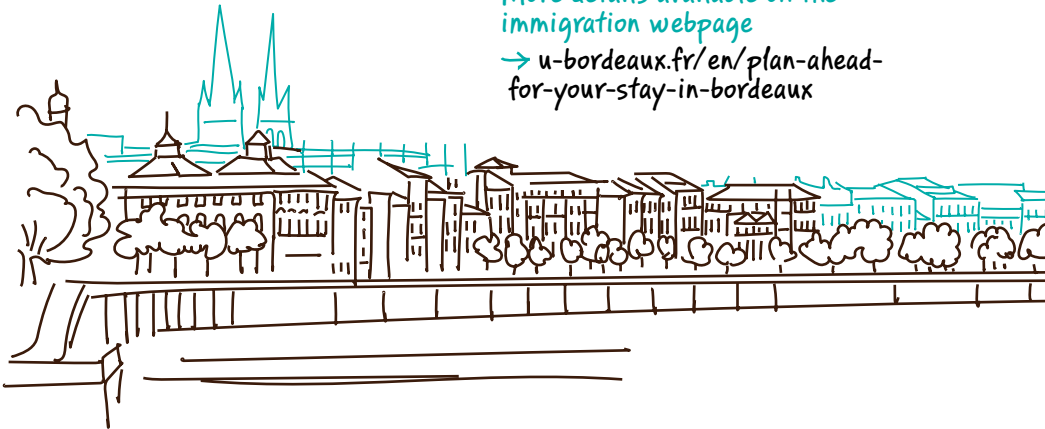
This is only for a limited, non-renewable period and based on the condition that French authorities have been previously notified by the University of Bordeaux about the stay.

Residence permit

EU citizens and those from countries within the Schengen area do not need a resident permit. If you are from outside the EU and Schengen area, please contact your closest Consulate General of France for information on the residence permit.

More details available on the immigration webpage

→ u-bordeaux.fr/en/plan-ahead-for-your-stay-in-bordeaux



CHECKLIST - ALL YOU NEED TO KNOW TO FEEL AT HOME!

1/ BEFORE ARRIVING

- Read the guide! Especially the "Your studies" section. It covers what you need to know and do for the application/ registration procedures, immigration, healthcare, accommodation, budget, etc.
- Find and get settled in your accommodation
- Connect to the Buddy Programme website and find yourself a mentor to help with your integration process:
→ parrainage.u-bordeaux.fr

2/ FIRST FEW WEEKS

- Introduce yourself to the "Welcome Contacts"!
- Get yourself connected with our ENT system and validate your campus pass account
- Open a bank account
- Sign up for sports and cultural activities
- Take out a subscription with the TBM, the Public Transport Network of Bordeaux
- Find out about French classes
- Don't forget to validate your long-stay visa (VLS-TS) with the OFII within 3 months of arriving in France:
→ administration-etrangers-en-france.interieur.gouv.fr/particuliers/#/

3/ FIRST FEW MONTHS

- Contact your student associations of interest and get involved!
- Find out about Bordeaux and its surrounding region and make the most of your stay in one of the most beautiful places in France if not the world!



QUIZ

Which type of student are you?



This quiz will reveal aspects of yourself and help you discover exciting opportunities. Ready to explore your student personality?

1. To start, what was your personality like in high school?

- Always there to help others and listen to your friends after a breakup
- Best athlete in PE, already set to compete in the Olympics
- Super disorganised, always late for lunch in the cafeteria
- Elected class representative every year, the beginnings of a great political career!
- You would have liked some time to relax, if only gap years existed in high school...

2. You just arrived at the university, what does your typical day look like after taking the tram to campus?


- You drop by your favourite association's office before heading to the library
- You rush to the sports office to sign up for the surf course!
- You attend your lecture and have an interview for a future internship at the end of the day
- "Wait... I don't even know the tram line to get to campus!!"
- You study with your friend and participate in the cooking workshop at the Student Health Centre

3. After a busy week, what's your plan for the weekend?

- Always on the lookout for new releases, you suggest a movie outing with your classmates
- You've already planned everything: Cleanwalk & DJ-set
- You're looking for a new apartment: going on multiple roommate visits
- You take time for yourself: a relaxing afternoon and a stress management workshop
- You have lots of projects, what better than an afterwork event to present your start-up?

MOSTLY...



Mostly : You're always ready to get involved and help improve your daily life and that of others! Head to page 32 to find out how you can get involved at the university.

Mostly : Do you love sports? Sharing your cultural favorites? Group activities? Find all our great tips to enrich your student life on page 50




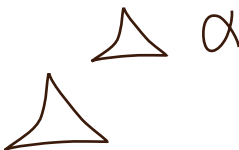
Mostly α : You're forward-thinking, already planning for the future! What will your next internship be, your first job? To learn how to build your project, go to page 24



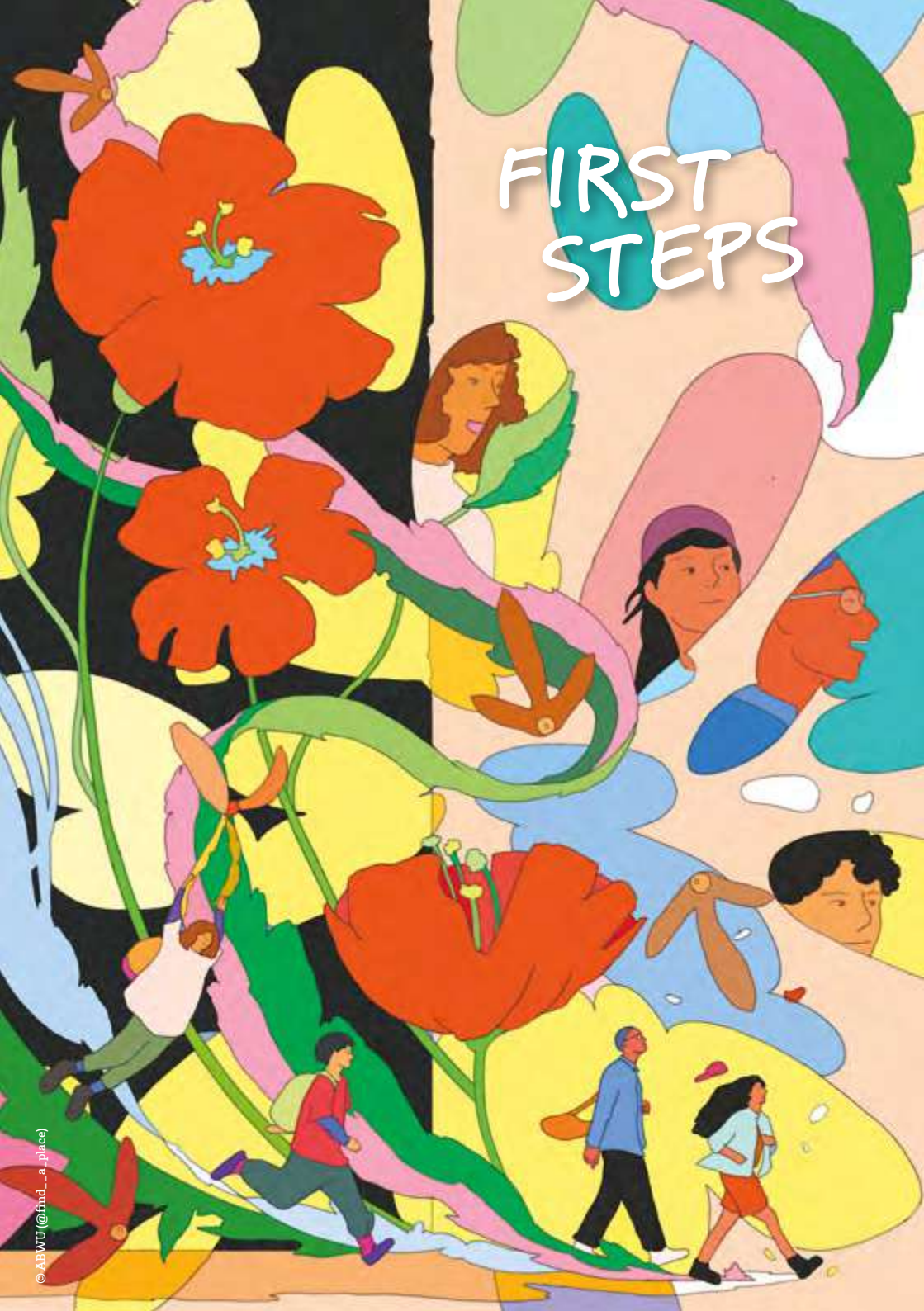
Mostly : You're not a management pro and need new strategies to get by. Find our tips for organising your daily life on page 40



Mostly : You want to take care of yourself and ensure a trouble-free academic year. Discover all our support actions for your success on page 18



FIRST STEPS



DIGITAL SERVICES FOR YOUR SUCCESS

Digital work environment

Whether you are at home or out and about, you have access to a modern, high-performing educational environment: digital work spaces, information services, educational platforms... a large variety of technological tools are available that help you with your studies.

Your email address

As soon as you register, the university will provide you with an email address that is valid for the duration of your studies. The format is as follows:

first name.second name@etu.u-bordeaux.fr

This is your reference email and should be used for exchanges with your professors and the administrative & educational services of the university.

Your on-line educational resources

You have access to a variety of educational resources that are helpful for your classes. These resources are available 24 hours a day at home or elsewhere and include: class material, self-assessments, on-line exercises, etc.

GET CONNECTED

Get yourself connected with our ENT system and validate your campus pass account:

→ **activation.**
u-bordeaux.fr

If you have any problems, don't hesitate to ask your Student Life Centre for help!

DIGITAL SERVICES STATUS

Stay informed about maintenance operations, service outages, incidents, and more.

→ Check the app:



UNIVERSITY LIBRARIES

THE place to carry out your study and research! Publications and reviews may be consulted in the library or borrowed. There is also a wealth of on-line resources available (e-books, reviews, databases, etc.).

The university libraries cover all the disciplines proposed by the university and are located throughout all the campuses. Books may be borrowed with the Aquipass card and Internet access is available in all the libraries as well as group working spaces.

- ✦ **University library Marne**
18-22 cours de la Marne, Bordeaux
› Monday to Friday: 9am - 9pm
› Sunday: 9am - 6pm
- ✦ **Life and Health Sciences**
146 rue Léo Saignat, Bordeaux
05 57 57 14 52
› Monday to Friday: 8.30am - 10pm
› Saturday: 9am - 6pm
› Sunday: 9am - 5pm
- ✦ **Human Sciences**
3 place de la Victoire, Bordeaux
05 57 57 19 30
› Monday to Friday: 8.30am - 7pm
› Saturday: 9am - 6pm
- ✦ **STAPS (Science and Techniques of Physical and Sport Activities)**
12 avenue Camille Jullian, Pessac
05 56 84 52 33
› Monday to Friday: 8.30am - 6pm
- ✦ **Science & Technology**
Bât. B20 - allée Baudrimont, Talence
05 40 00 89 89
› Monday to Friday: 8.30am - 10pm
› Saturday: 9am - 6pm
› Sunday: 9am - 5pm
- ✦ **Law, Political Science, Economics**
4 avenue Denis Diderot, Pessac
05 56 84 86 55
› Monday to Friday: 8.30am - 10pm
› Saturday: 9am - 6pm
- ✦ **Libraries of Public law, Private law and History of law**
*Legal research building
avenue Léon Duguit, Pessac*
05 56 84 25 70 / 05 56 84 85 76 / 05 56 84 29 77
› Monday to Thursday: 9am - 5pm
› Friday: 9am - 12pm
- ✦ **Management Science**
35 avenue Abadie, Bordeaux
05 56 00 96 75
› Monday-Tuesday: 8.30am - 7pm
› Wednesday-Thursday: 8.30am - 6pm
› Friday: 8.30am - 4pm
- ✦ **Institute of Vine and Wine Sciences**
210 chemin de Leysotte, Villenave d'Ornon
05 57 57 58 21
› Monday to Friday: 9am - 6pm

OPENING TIMES:

→ bibliotheques.u-bordeaux.fr/Infos-pratiques/Horaires-et-calendriers

Reserve a study room

8 libraries offer different types of study spaces, like group rooms and individual booths, that you can book through the university portal.

With Babord+

the research interface offered by the university, you may directly consult from your home the catalogue of information resources, reserve a book or a document, prolong your book loan.

With BUTchat

chat live with our librarians. Monday to Friday, 9am to 5pm, via the intranet or the library website.

AQUIPASS CARD, A STUDENT CARD AND SO MUCH MORE...

When you arrive at the university, you are provided with your personal Aquipass card. This is your student passport that will be your source of ID and will let you use the many services on offer: taking out books at the library, eating at the university restaurants... You may also carry out certain purchases thanks to the electronic Izly card system.

Izly, how does it work?

The Aquipass card has an integrated Izly card system. You must create an online account that can be credited in a totally secure way (the Student Life Centre may help with setting it up if necessary). It's up to you then to decide whether to pay with your contactless student ID or your mobile phone. This may be used in the university cafeterias and restaurants thus avoiding the need to pay in cash.

How to credit the Izly card?

You can credit your account starting from 5 € with just a few clicks, whether from your mobile app or the web. You can transfer money from your Izly account to your bank account at anytime.

→ izly.fr

STUDENT AND CAMPUS LIFE CONTRIBUTION (CVEC)



For example, what is the CVEC?

- Over 60 physical activities offered
- Free artistic practice workshops
- Events organised on campuses like "Fête! la rentrée"
- Free menstrual hygiene product dispensers
- A solidarity grocery store for students facing financial hardship
- Renovation of building corridors

That cosy couch in the student life hub? It's funded by your contributions. The festival organised by student associations? Those free condom dispensers? Same deal! The CVEC is used to make your daily life better.

Sports at the university

Thanks to the CVEC, the sports license fee has been reduced to 20 €. It also supports ASUBx (the Sports Association of the University of Bordeaux), which enables more than 400 athletes to represent the university in national and international competitions.

Offerings of the Student Health Centre

In addition to its role as a free health centre open to the student community, the Student Health Centre offers numerous events on health issues: access to care, mental health, sexuality, etc. You can also receive training in mental health first aid and participate in cooking or stress management workshops!

→ sante-etudiants-bdx.fr

Festival des engagé.e.s

Associations, university democracy, solidarity, sustainable development, improving living conditions on campus... The "Festival des engagé.e.s" celebrates all forms of engagement. Find booths, activities, and discover how to get involved and showcase your commitment.

See you on November
26th

Emmaüs Connect

The University of Bordeaux and Emmaüs Connect distribute refurbished computer kits (laptop, mouse, case) to students facing financial hardship. This initiative promotes equal access to digital tools, supports academic success, and aligns with sustainability and ecological transition goals.

Tuesday concerts

From October to March, enjoy free concerts from 12am to 2pm on all campuses. With a programme co-produced with Bordeaux's cultural organisations and emerging artists to watch, it's an event not to be missed!

📍 cultureunivbx



OUR GOAL:
YOUR SUCCESS

SUPPORT FOR STUDENTS WITH SPECIFIC NEEDS

Students with disabilities or long-term illnesses, high-level sports students, confirmed artists, elected students, other profiles according to criteria (employees...), the university supports you.

With the PHASE service, you can benefit from:

- a local service
- an evaluation of your needs and advice on your arrangements
- a privileged contact in your training component

DID YOU KNOW?

To benefit from PHASE service support, you'll need to put together a file, and remember to bring proof of your situation.

Please note: reporting deadlines apply to sportsmen and women, artists, employees and hired workers.

Personalised and progressive support throughout your journey:

- Educational support
- Technical and human help
- Flexible arrangements for exams
- Flexible studies and schedule arrangements

→ Contact the PHASE service on your campus, contacts p.60

→ u-bordeaux.fr/en/students-with-special-needs

APPLYING FOR DISABLED WORKER STATUS DURING YOUR STUDIES

What is disabled worker status?

Disabled worker status, known as RQTH in French (reconnaissance de la qualité de travailleur handicapé) is an administrative status that allows you to assert your rights and facilitates access to a wide range of education and employment measures for individuals with disabilities.

Why apply?

Being recognised as a disabled worker isn't compulsory, however applying for this status does present a number of very important advantages, both during your studies and when looking for a job.

How to apply?

Submit an application to the *Maison Départementale des Personnes Handicapées* (MDPH) of your place of residence. The decision from the MDPH does not mention the nature of the disability or illness, nor the degree of incapacity.

Who can advise you at the university?

- × **Students and unfunded doctoral candidates:**
Social worker at the Student Health Centre
→ servicesocial.ese@u-bordeaux.fr
- × **Doctoral candidates with funding:** university disability contact correspondent
→ correspondant.handicap@u-bordeaux.fr

TO LEARN MORE
→ "Students with disabilities" on Service-Public.fr

→ u-bordeaux.fr/faire-reconnaitre-son-handicap

SOCIAL AID

During your studies, you can benefit from assistance if you are experiencing financial or social difficulties.

Places to listen

The social service assistants at the Student Health Centre or Crous are there to listen, welcome and support you. They provide information on the various types of assistance available in the event of financial, family or material difficulties.

→ **Contacts p.63**

If you have any questions

Regular information points are set up by the Student Life Centres on each campus to provide information on the university's financial aid. Do not hesitate to come and meet with them for any questions you may have about eligibility criteria, or for assistance with your online application.

Student Life Centres can also inform you about solidarity aid: food bank distributions, donation boxes, secondhand equipment at Etu'récup...

→ bve.social@u-bordeaux.fr

→ u-bordeaux.fr/en/campus/daily-life/social-and-financial-aid

LE COMPTOIR D'ALIÉNOR

* **Social and solidarity food store**

Students in financial difficulty can access food and hygiene products here at 10 to 30% of market prices.

→ fede-atena.fr/le-comptoir-dalienor



HEALTHCARE

Social security affiliation

Depending on your situation, you will have to:

- either join the French health insurance system to benefit from health coverage
- or be the holder of a European Health Insurance Card (EHIC). In this case, the health insurance of your country of origin will cover your health expenses and refund you consequently.

Please note, that for a stay of less than 3 months, it is not possible to benefit from social security in France. Health insurance is strongly recommended.

MENTAL HEALTH FIRST AID

This training programme is designed to help a friend, peer, or anyone experiencing psychological distress. It aims to improve mental health awareness and provide the skills needed to offer early support to individuals developing a mental health issue or going through a mental health crisis. No prior experience is required, and the training is free for students. It lasts 14 hours over two consecutive days in person.

Complementary health insurance

In order to complete the reimbursement of your health expenses, which are not entirely covered by social security, you can subscribe to a complementary health insurance policy via the organisation of your choice.

Repatriation and civil liability insurance

You must subscribe for repatriation and civil liability insurance to cover any costs and/or damages that could be caused during your stay in France.

Contact the "Mutual Health Insurances" for students which propose this type of insurance and may inform you on how to subscribe.

→ etudiant-etranger.ameli.fr

MENSTRUAL LEAVE

Students experiencing period-related pain (dysmenorrhea) can request up to 24 hours of menstrual leave. The certificate can be generated via the intranet within 48 hours before or after the absence and is renewable every 21 days. It serves as a valid justification and includes information on menstrual pain and health advice.

STUDENT HEALTH CENTRE

To stay in good health while you're studying in France, feel free to visit the Student Health Centre.

Teams of medical professionals will welcome you, give you advice and information and direct you depending on your needs:

- x general medicine
- x sexual health
- x psychological support
- x nursing care
- x vaccinations
- x study adjustment notice
- x certificates of no contraindication to sport...

All without having to pay any fees (full third party payment).

The Student Health Centre also offers workshops on stress management and mental health first aid training, to make the most of your university year.

Monday to Thursday: 9am - 7pm
Friday: 9am - 5pm

- > Open during the All Saint's Day holiday, and winter and spring holidays
- > Closed during the Christmas holidays and for 4 weeks during the summer holidays.

→ sante-etudiants-bdx.fr
→  [espace_sante_etudiants_bdx](#)

Appointments can be made via doctolib.fr/Espace Santé Etudiants Pessac

or by telephone on 05 33 51 42 00

→ 22 avenue Pey-Berland in Pessac Tram B - Doyen Brus

BUILD YOUR PROJECT



FROM UNIVERSITY TO YOUR 1ST JOB

From your first steps at university to starting your career, the EOC (Career Guidance Centre) is here to guide, advise and support you.

Helping you with your studies, professional projects, and personal goals:

- Career and guidance counsellors and psychologists
- Walk-in sessions, individual coaching, specialised resources, workshops, and webinars

→ u-bordeaux.fr/en/career-guidance

→ 05 57 57 18 04

→ orientation.carrieres@u-bordeaux.fr

All the info about the Career Guidance Centre



YOUR TOOLBOX

Pro Fil Doc' curates resources on courses, careers, industry sectors, and the job market.

→ pro-fildoc.u-bordeaux.fr

Surveys by the University Life and Training Observatory provide key data on graduate outcomes.

→ u-bordeaux.fr/Formation/Enquetes-et-statistiques

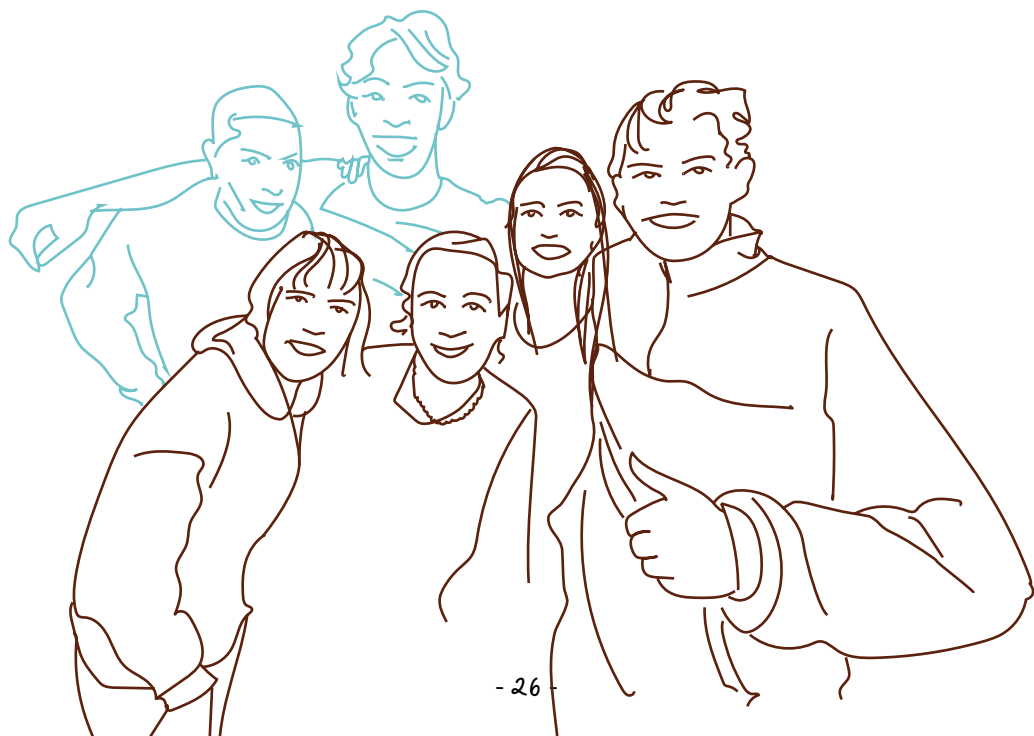
The internship directory lists companies and organisations that can host you.

→ Check it out at the EOC

JOIN THE UNIVERSITY'S COMMUNITY NETWORK

This space is dedicated to students (past and present), university staff, and partners. It's designed to support your professional journey and help you build your career.

- Find an internship, work-study placement, or your future job through the Career Centre
 - Stay in touch and exchange with peers via the alumni directory and dedicated groups
 - Grow your career using the directory of partner companies of the University of Bordeaux
 - Stay up to date with the university's latest news
 - Network at our alumni events and connect with former students
- Register now to access services tailored to you!
→ alumni.u-bordeaux.fr



PRESS PAUSE: YOUR GAP YEAR AWAITS

To slow down the rush of studies or give yourself some perspective by changing your environment, a gap year ("césure") is a welcome pause allowing you to develop skills and broaden your personal or professional experience.

What can it be used for?

Exploring the job market, engaging in a cause, furthering your education, or simply finding a change of scenery... The possibilities are numerous:

- > Civic service or volunteering
- > Volunteer work
- > Employment or personal project
- > Starting a business
- > Training (different from your initial course of study), including abroad
- > Internship unrelated to your studies (up to 6 months in the same organisation)
- > etc.

You can apply for a gap year for one or two semesters, regardless of your level of study, including from the first year of undergraduate studies.

What about my status during and after this break ?

Do not worry: you retain your student status, and the learning agreement you signed before starting your gap year guarantees you will return to your chosen course.

You just need to find your project!

→ u-bordeaux.fr/Periode-de-cesure

ENLIGHT: EUROPE WITHIN REACH OF YOUR STUDIES

If you are studying at the University of Bordeaux, you are part of the ENLIGHT alliance — a network of 10 European universities. The goal? To make student mobility easier, develop a shared course catalogue, and offer enriching international experiences, both online and in person.

Partner universities:

- Berne, Switzerland
- Bilbao, Spain
- Bratislava, Slovakia
- Galway, Ireland
- Gand, Belgium
- Göttingen, Germany
- Groningen, the Netherlands
- Tartu, Estonia
- Uppsala, Sweden

Real deals for you

Access a joint course catalogue (in-person, hybrid, or online) offered by the 10 partner universities

→ enlight-eu.org/students/courses

Simplified mobility

- Blended intensive programmes: part of the course is online, combined with a one-week on-site experience.
- Digital campus: take courses from a partner university abroad... right from home.
- Erasmus+ Mobility: streamlined application process with automatic ECTS credit recognition.

Get involved, travel, create

European projects and events

- Attend fully funded conferences such as the Teaching & Learning Conference or Student Network Conference...
- Join an international working group or take part in a student-led project.

The Student Network: your ENLIGHT representatives

Student ambassadors from Bordeaux sit on the official ENLIGHT student board. They can answer your questions, guide you through your mobility plans, or support you in developing your own project.

Funding for your initiatives

Are you part of a student association and want to promote European mobility on campus? ENLIGHT can help finance your project. Contact the student ambassadors to learn more.

→ ambassadeur.ices.enlight@u-bordeaux.fr

LANGUAGE CENTRES

Before setting off abroad, or simply to become more proficient, the university's three language centres can help you improve your foreign language skills throughout your course.

- Courses in English, Spanish, German and Italian... (depending on the language centre)
- Guided self-learning available

- English and Spanish conversation classes
- Preparation for the following certificates: TOEIC, Cambridge, TOEFL, IELTS... There are resources available to prepare you for these exams. The language centre teams will direct you towards the certificates which are most appropriate for your plans.

IMPROVE YOUR FRENCH!

Students within an exchange programme

You can benefit from French classes free of charge. These will help you follow and understand your specialty classes and also help your integration process within the campus and the city of Bordeaux.

Students outside an exchange programme

Classes may be taken with the Alliance Française:

126 rue Abbé de l'Épée
33000 Bordeaux
05 56 79 32 80

→ inscription@alliance-bordeaux.org

› You may also contact Bordeaux Montaigne University, DEFLE Study Department:
French as a Foreign Language
05 57 12 44 43

→ defle.u-bordeaux-montaigne.fr

"Moodle for French as a foreign language courses"

Improve your French before even coming to Bordeaux! All you have to do is connect to the online platform that provides **all international students** with free French language classes as well as advice and information for arriving and getting settled in Bordeaux.

→ u-bordeaux.fr/en/plan-ahead-for-your-stay-in-bordeaux

STUDENT ENTREPRENEUR: YES, YOU CAN!

Sign language translation app, sneakers made from upcycled waste... Got an idea to develop?

Or thinking about launching your own venture, but don't yet have all the tools to get started?

UBee Lab, the University of Bordeaux's incubator, is the starting point for your entrepreneurial journey.

It offers first-level information, guidance and advice on entrepreneurship to all students, and provides one-on-one support for more advanced projects through the National Student Entrepreneur Status.

→ ubeelab.u-bordeaux.fr

READY, SET, APPLY!

1 – Submit your application online via the national SNEE platform

→ snee.enseignementsup-recherche.gouv.fr

2 – Take part in one of the selection committees held on-site at the incubator

- ✘ Free, well-equipped co-working spaces on multiple campuses
- ✘ Expert consultations and thematic workshops
- ✘ Connections with the local ecosystem to get grounded from the early stages of your project
- ✘ A stimulating community of budding entrepreneurs to break out of isolation

TRY IT OUT!

Want to get into DIY? Interested in doing science differently? Check out these spaces on your campus where everyone can learn, collaborate and create.

FabLab Coh@bit

The FabLab team will help you bring your digital fabrication projects to life. The goal? To work together and learn to use complex tools like 3D printers and cutting tools. Want to know more?

→ **FabLab Coh@bit on the Bordeaux Institute of Technology campus in Gradignan**

Science L@b 22

Located in the A22 building on the Peixotto campus in Talence, this new scientific space offers real lab experiments, with projects proposed by a teaching team or carried out independently. Want to use research equipment to test new ideas? Meet other students from different fields?

◆ @science.lab22

DIY Workshops: learn by doing

Want to create, repair, cook, or garden? Free Do It Yourself (DIY) workshops are offered at lunchtime on the Carreire campus and at Station Marne (Victoire campus).

Open to everyone, these sessions are led by transition ambassadors, the university's Fab Lab, or partner associations. It's a great opportunity to explore hands-on, accessible activities such as crafting, 3D printing, sustainable cooking, or urban gardening.





ENGAGE
IN YOUR
UNIVERSITY

TAKE ACTION!

Volunteering, joining an association, or running for an elected position: there are so many ways to get involved!

Join a student association

With over 140 associations at the University of Bordeaux, you're sure to find one you love! And if you don't? Start your own! Get involved in cultural, sports, humanitarian, or academic activities and contribute to campus life.

→ u-bordeaux.fr/en/associations

Improve campus life

Join the campus life councils' working groups. They work year-round to improve quality of life on our campuses.

Learn more, propose your ideas and bring your projects to life to enhance the campus with the student participatory budget.

→ participation.u-bordeaux.fr

Choose your engagement!

Join our Community Network

Getting involved is a unique opportunity for personal growth and development. It allows you to build valuable skills that will support both your academic success and future career.

The university has gathered a wide range of engagement opportunities – on campus or with partner organisations (associations, companies) – all available through its community network.

Register now to access services designed just for you!

→ alumni.u-bordeaux.fr

More information:

→ engagementetudiant@u-bordeaux.fr
→ linktr.ee/engagementetudiantub

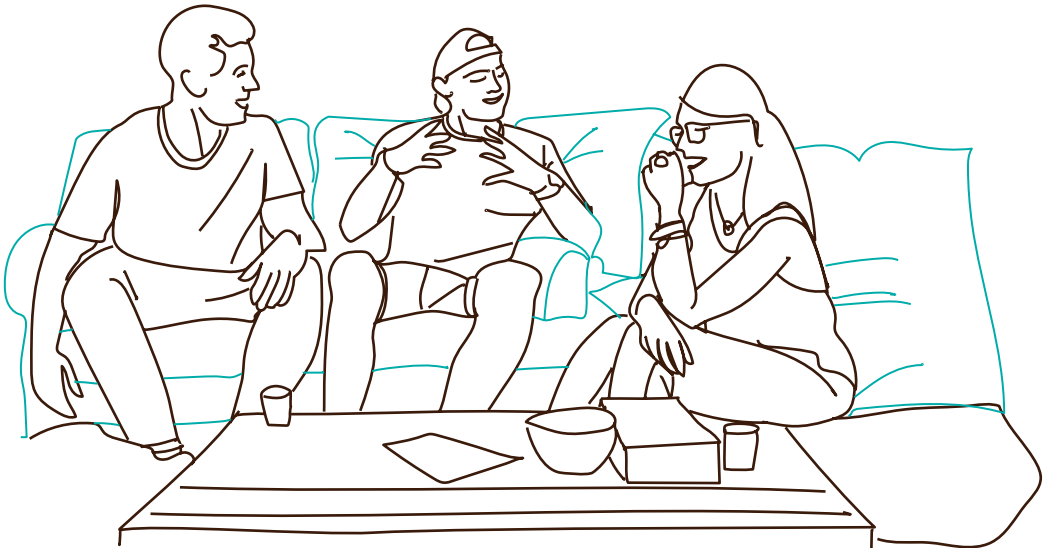
FOR MORE INFO

→ contact your Student Life Centre
→ Meet student associations all year round at campus life events

Highlight your commitment

Your involvement can take many forms: volunteer firefighter, reservist, association volunteer, civic service... Various options are available to recognise your engagement depending on your academic programme.

- **Engagement recognition system:** earn ECTS credits by validating a course unit (or part of one) as part of your curriculum.
 - ➔ Contact your academic advisor to learn more.
 - **Student engagement course unit:** this teaching unit contributes to your degree by awarding bonus points.
 - ➔ Contact your Student life centre to check if such options exist within your programme.
 - **Skills recognition:** create a Portfolio of Experiences and Competences (PEC), a valuable asset for job searches.
 - ➔ The Career guidance centre can support you in this process.
 - **Open badges:** a fun and simple way to highlight transversal skills you've gained.
- ➔ u-bordeaux.fr/en/campus/getting-involved



DEMOCRATIC LIFE ON CAMPUS

Just like French society, the university operates as a democracy where everyone has the right to make their voice heard.

The life and governance of the institution are structured around decision-making councils that define its political direction and major strategic choices:

- **Central councils** (Board of Directors + Academic Council)
- **Faculty and school councils** (colleges, institutes, faculties, and UFRs)

These councils are made up of elected members (faculty, students, administrative staff) as well as external representatives.

Elections are regularly held to renew the representatives sitting in these bodies. This is your opportunity to vote for the people who will speak on your behalf and advocate for your interests within your programme and the wider university.

➔ u-bordeaux.fr/en/boards-commissions-committees

Run for office

Get involved by standing as a candidate and participating in decisions that affect you. Student representatives play a key role in university decision-making, covering everything from teaching to student life, organisation and resources.

➔ u-bordeaux.fr/en/campus/getting-involved

**CENTRAL
COUNCILS
ELECTIONS**

➔ see you in
december!

THE STUDENT PARLIAMENT: A NEW SPACE FOR ENGAGEMENT

Inspired by citizens' assemblies, the Student Parliament offers students a space to debate, propose initiatives, and actively contribute to university life. It promotes more inclusive governance and encourages student civic engagement.

The Parliament is composed of elected representatives (from student associations or university councils) as well as volunteers (randomly selected students without formal mandates).

As a non-statutory body in its initial phase, this experimental project will be launched at the end of 2025.

TRANSITIONS: TIME FOR ACTION

To tackle the environmental, social, economic, and political crises of our time, the university is taking transformative actions in favour of ecological and societal transitions. To do so, it relies on its committed communities, which have already been driving numerous initiatives for a long time.

Adopting eco-friendly habits in daily life, showing empathy, using awareness tools, joining a network of engaged individuals, participating in democratic life, and integrating more sustainable practices on campus: there are many ways to act.

The University of Bordeaux supports and accompanies these initiatives so that everyone can contribute and find their place in this collective project.

Keep an eye out on campus and on social media: all year round, transition ambassadors (student jobs) conduct information and awareness campaigns.

 [ambassadeur.icestransitions](https://www.instagram.com/ambassadeur.icestransitions)

The university has established an independent body to evaluate its policies, the **Council for Environmental and Societal Transitions**. This council is composed of university community members and chaired by an external figure, providing critical and constructive feedback to help the institution improve and reach its goals. It is equally composed of men and women, and includes both students and staff.

SO, WHAT CAN YOU ACTUALLY DO?

Want to get involved in a more sustainable lifestyle? Check out some initiatives where you can learn more and make better choices!

Green games: like "Jeopardy!" but for the planet

Structured like a TV game show, the Green Games are an inter-campus competition on social and environmental issues, held throughout the year. Win the grand finale and snag prizes like rugby tickets, surfing lessons, or even a trip.

Got a green thumb? Check out the community gardens

Community gardens are the perfect place to get into permaculture and grow organic fruits and veggies:

- > Appellation Origine Campus (AOC) on the Montesquieu campus
- > *L'astragale et la fourmi* on the Peixotto campus

Catch a ride with Karos

Carpooling to campus is way better, right? Use Karos, a free carpooling app that connects you with other students making similar trips. Carpooling is great for the planet and your wallet!

The GOAT of thrift shops: Etu'Récup

This is the place to be if you're looking for zero-waste tips or want to check out a thrift shop. Join workshops to repair and reuse items. Always wanted to fix that hole in your t-shirt? Or learn how to change a bike tire?

→ eturecup.org

"Eating for tomorrow"

A guide, written by and for the student community, that offers ideas for easy and quick recipes that are both environmentally friendly and healthy. You'll also find great tips and plenty of other advice on how to eat differently!

THEY MAKE THE ♥ OF THE CAMPUSES BEAT

WHO? OUR STUDENT
ASSOCIATIONS,
OF COURSE!

Nearly 140 associations at
the University of Bordeaux

Spread across all sites and
campuses.

Whether they are focused on academics, culture, sports, social issues, citizenship, solidarity, humanitarian efforts, environmental advocacy, health, or just plain fun, there's definitely one that suits you.

It's a great way to start the year by making friends and contributing to the community!

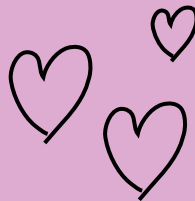
And if you don't find what you're looking for or have a very specific project, why not start your own?

STUDENT LIFE
CENTRES:
THE ASSOCIATION
EXPERTS

These centres know everything about creating associations, planning and funding projects, or organising events!

They are your go-to contacts for funding requests from CVEC and FSDIE (Fund for the support of student initiatives).

→ u-bordeaux.fr/en/campus/getting-involved



THEY INSPIRE US, HOW ABOUT YOU?

ESPACE 120

Managed by a student association, Espace 120 offers a fully equipped rehearsal studio on the Peixotto campus. Open to students and staff from the universities of Bordeaux and Bordeaux Montaigne, this space promotes access to musical practice and hosts concerts and open mic events throughout the year.

 [espace120](#)

M.E.U.F.

M.E.U.F. (Universal Feminist Student Movement) is the student activist association dedicated to intersectional feminist struggles! On the Victoire campus, members offer various activities: creating zines, feminist news and agendas, cultural recommendations from artists. You can also join their awareness workshops and discussion groups.

 [meuf_asso](#)

CHOQUEZ-NOUS

The idea is simple: teach as many people as possible the essential steps to take in case of cardiac arrest. That's what the "chockers," health students in the association, do during free 15-minute training sessions.

 [choqueznous](#)

TRIBUNE MONTESQUIEU

With the goal of developing students' critical thinking, this law student association organises conferences, public speaking contests, and even fun mock trials, where prosecution and defence clash over various topics or characters (like Dionysus, the European Union, Tinder, or even Batman!).

 [latribunemontesquieu](#)

ACCOMMODATION

Finding accommodation in Bordeaux can be a challenge! If you do not have a university residence and have not found a solution before leaving your home country, you will need to search for accommodation in the private sector. Don't hesitate to contact the Student Life Centres for help!

Types of housing

- University housing (Crous)
- Social landlords (subject to means-testing)
- Private owners and residences

Security deposit/Rental payment guarantee

When you rent an apartment, you must pay a security deposit equivalent to one or two months' rent, and have a guarantor (a person or organisation who assures payment in the event of your insolvency).

→ www.visale.fr

Financial aid for accommodation

As with French students, you may qualify for student accommodation aid from the CAF (Caisse d'allocations familiales – Family Benefits Agency). For this aid, you must be a student and have a rental contract in your name. For non-EU students, you will need a residence permit that is valid for over 3 months. You may complete your application on-line via the following website:

Online application → caf.fr

Accommodation insurance

Personal insurance is obligatory no matter your accommodation, whether you are staying with a friend or renting in the private sector. The insurance amount varies (between 40 € and 80 € per year) depending on the size of the apartment, the number of rooms and the risks insured (fire, theft, water damage, civil liability, damage to adjacent buildings, etc.).

Student Life Centres

On the various campuses, they can help you finding accommodation, explaining contracts, applying for financial aid.

→ bve.logement@u-bordeaux.fr

Don't hesitate to ask for the student housing guide!

Your arrival in Bordeaux

The university and the Welcome Offices are closed in August and on weekends. Students who will be staying in university residences must contact these residences before arriving to find out about opening dates and times. If the student residence is closed, you will need to book a night or two in a hotel or Youth Hostel.

A few tips

- Plan an extra budget for the first month for miscellaneous expenses
- Beware of scams on housing websites
- Never buy lists of accommodations or visits
- Never pay money in cash and never pay the rent or the deposit before signing the lease.

→ u-bordeaux.fr/en/finding-accommodation

Crous accommodation

- ✗ **International students outside an exchange programme** (for graduate - Master/Doctoral students only) : If you wish to apply for a room in a university residence, you must complete an application on the Crous website (Regional Centre of Student Social Services) as of early July. **For undergraduate (Bachelor) students, Crous accommodation is not available.**

→ lescrous.fr

→ messervices.etudiant.gouv.fr

- ✗ **International students within an exchange programme** : Erasmus students and international students within an exchange programme may apply for a room in a university residence as of early July. For this, you must contact the International Office for more information on the procedure to be followed (contact p.53).

Good to know ?

- ✗ **Étu'récup**, the campus recycling service which offers very affordable furniture, electronic appliances and dishes to help with your installation.

→ eturecup.org

- ✗ **Studapart**

The University of Bordeaux's dedicated housing platform with hundreds of exclusive offers: studios, flatshares, homestays...

You may also benefit from personalised support throughout your stay/rent.

→ Contact: booking@studapart.com

→ u-bordeaux.studapart.com/fr

USEFUL TERMS

- ✗ **Studio**: 1 room apartment with integrated kitchen and bathroom/toilet
- ✗ **F1 ou T1 bis**: main room, separate kitchen and bathroom
- ✗ **F2 ou T2**: sitting room and separate bedroom, bathroom
- ✗ **CC**: "Charges comprises" - utilities and other charges (water, electricity) included
- ✗ **Équipé**: apartment with a fitted kitchen: oven, hot plates, fridge, sink
- ✗ **Meublé**: furnished apartment with at least a bed, tables, chairs, sofa etc....

FINANCE

Cost of living

A monthly budget of approximately 1100 € is necessary for living in Bordeaux. With your student status, you have access to certain services such as: university cafeterias and restaurants, libraries, reduced transport fees, sports facilities, etc.

The first month the budget is triple the usual amount as there are extra costs linked to settling in your accommodation, registering for the university, signing contracts for electricity, the telephone...

Opening a bank account in France

If you are staying in France for longer than 3 months, you may open a bank account. The process is quite simple: you must simply provide your passport (or equivalent ID document), your residence permit (if a non-EU citizen) and proof of residence.

You will need a bank account in your name for many reasons:

- Financial aid for accommodation and Social Security reimbursements are paid automatically to a bank account;
- A checkbook is required to pay rent or electricity. You may also choose to pay by direct debit or with a credit card.

Finding a student job

In order to earn some pocket money, you may find yourself a part-time job ("petit boulot" in French). These jobs include childcare, tutoring (including language classes), carrying out surveys, seasonal agricultural work (picking strawberries, apples, grapes, etc.). Work regulations vary according to the type of visa. In most cases, it is possible to work up to 60% of a full-time job, around 20h per week.

The university is hiring!

All year round, many departments employ students for various tasks.

→ u-bordeaux.fr/job-etudiant

JOB DATING

→ September 15th in Talence
and September 17th in Pessac

Online preparation workshops
and meetings with recruiters.
Over 700 job offers!

→ Sign up for the student job
newsletter:

bve.jobs@u-bordeaux.fr

EXAMPLE OF MONTHLY EXPENSES

Accommodation

- ✗ Room in university residence..... 250 €
- ✗ Student residences..... 600 €
- ✗ Private studio downtown..... 600 €

Repas

- ✗ Meals in university restaurant (2 meals/day).....186 €
- ✗ Breakfasts.....40 €

Transport


- ✗ Tram/bus.....20.80 €

Miscellaneous fees

- ✗ Maintenance, clothes 100 €
- ✗ Supplementary insurance..... 25 €
- ✗ Hobbies and outings 100 €
- ✗ Phone subscription.....20 €

Monthly total **1091 €**
 (with a private studio downtown)

Additional expenses for the first month

- ✗ Accommodation expenses + deposit and agencies fees (2 months' rent approximately) 1500 € 
- ✗ Registration fees (exemption for French government scholarship holders) 300 €
- ✗ Student and campus life contribution (CVEC)105 €
- ✗ Liability insurance20 €
- ✗ OFII tax.....60 €
- ✗ School supplies, books, handout..... 100 €

1st month total **3176 €**

(Monthly budget + additional expenses)

MY BUDGET

- - -

- - -

- - -

- - -

- - -

- - -

- - -

- - -

- - -

- - -

- - -

- - -

- - -

- - -

- - -

- - -

- - -

- - -

TRANSPORT

All campuses of the University of Bordeaux are accessible by tram or bus and have self-service bike stations.

As a student, you are eligible for reduced public transport rates.

The "Pass Jeune" card

This pass gives you access to the entire network (tram, bus, Bat3, and park-and-ride) if you are under 28:

- Annual Pass Jeune: 20.80 € per month*
- Monthly Pass Jeune: 35.10 €*

These subscriptions can provide access to the use of self-service bikes, subject to a deposit.

The "10 Voyages Réduit - Étudiant" card

For occasional travel: 10 tickets at a reduced price (8.40 €). You must present the TBM card (free of charge) with this ticket as it validates the price reduction. The ticket is available for students under 28 years old (35 years old for international students) and gives you unlimited access to the tram, bus and Bat3 (the river shuttle) for an hour after initial validation of the ticket.

→ infotbm.com

Driving

✦ EU citizens

If your driving license was obtained in a European country you have the right to drive in France whilst respecting the French road code of course!

✦ Non-EU citizens

If you have a non-European driving license and you are settling in France, you have the right to use your license for one year maximum after the date of arrival in your main residence in France. This period cannot be extended and once it is finished your driving license must be exchanged for a French driving license.

GOOD TO KNOW

› Bordeaux Métropole offers a solidarity-based pricing system with a fare adapted to resources

→ tarificationsolidaire.bordeaux-metropole.fr/Accueil.aspx

› TBM offers free bike loans and long-term rentals

→ portail.cykleo.fr/levelopartbm

SAFETY AT THE UNIVERSITY

Ensuring your safety, both online and on campus, throughout your studies.

Your go-to contact: PCSI

Fire? Need medical assistance? An assault? The university fire and rescue centre (PCSI) quickly intervenes on-site or remotely. PCSI agents are stationed on all campuses to ensure everyone's safety.

→ Find the contact details of your campus PCSI at the end of the guide.

SMS ALERTS

Stay informed in real time in case of a major incident or immediate risk (attack, health alert, major IT outage...).

Sign up for SMS alerts and don't miss important updates!

→ More info available on your intranet

Protecting your data

The university follows the General Data Protection Regulation (GDPR) when handling your personal data. The university pledges to use your data only for institutional needs, ensure its confidentiality and that those who handle it respect this confidentiality, while implementing all necessary measures for its protection.

Watch out for phishing!

Phishing aims to steal your personal information. These are often fake messages pretending to be from the university, trying to trick you into clicking on links to steal sensitive information.

➤ If you entered your login details after clicking a suspicious link, change your IDNUM password immediately.

➤ Report it right away to the Digital Services Center and forward the suspicious message to csn@u-bordeaux.fr

➤ If you think someone's taken over your account, change your password right away—if you don't, they can still access it.

Passwords = secrets

When creating a password, don't use personal info like your name or birthdate. Your passwords are private—never share them, not even with university IT staff!

UNITED AGAINST DISCRIMINATION

The university stands against all forms of discrimination, That includes those based on origin, gender and gender identity, physical appearance, sexual orientation, disability, or religion.

Fighting violence, supporting victims

- ✘ The "cellule d'écoute, de veille et de signalement" (CEVS / Listening, monitoring and alert unit) is here to help. They offer a safe, non-judgmental space where you can talk, get advice, and be directed to the right support.
- ✘ Whether you're a witness or a victim, you're not alone. Let's stay alert and speak out: harassment, hazing, or gender-based and sexual violence have no place at university. Let's talk about it. Let's take action.

Join us for upcoming awareness events:

- Equality fortnight in November
- The month of inclusivity in March

- Report form available on your intranet
- celluledeveille.etudiant@u-bordeaux.fr

Report, include, respect:
three reflexes for a safer university.

WHAT'S FOR LUNCH?

There are plenty of dining options on campus for lunch or dinner.

Crous university restaurants

University restaurants are the go-to for students. Located near campuses, Crous teams serve complete and varied meals.

Food trucks on Bordeaux campuses

The university also offers convenient, diverse (including vegetarian and vegan options) and affordable (from 6.50 to 15 €) food truck options, even on remote sites! For schedules and updates, follow the Student Life Centre Instagram page or check the dedicated boards on your campus.

For opening hours and locations of university restaurants

→ crous-bordeaux.fr/se-restauration
→ Check the end of the guide for a list of dining halls.

GOOD TO KNOW?

With your Aquipass card you can pay for your meals, snacks, drinks in all the university restaurants and cafeterias. You may also pay with the Izly app on your telephone if you've forgotten your student card.

A TIP?

Heat up your meals and have lunch in the student centres located on the different campus sites:

- × **Peixotto and Bordes Campuses**
 - Ground floor corridor A22, ground floor lounge A21, ground floor lounge B6
 - Buildings A1, A2, and A10
- × **Montesquieu Campus**
 - Forum area
- × **Victoire campus**
 - Station Marne
- × **Carreire campus**
 - Student Life Hub

FIGHTING FOOD INSECURITY

Free food distribution

The University of Bordeaux, together with local partners like the Bordeaux and Gironde food bank, the CROUS, the Atena Federation, and the *Un espoir solidaire* association, has set up a free food parcel distribution for students facing financial hardship.

Distribution locations:

- University pool on the Monadey campus in Talence
 - Campus student life hub on the Carreire campus in Bordeaux
 - University centre for management sciences (PUSG), Bastide campus in Bordeaux
- rendezvous.u-bordeaux.fr/centre/distribution-alimentaire

Note: no distribution will take place without prior scheduling through a social service assistant. Food distributions are also organized by the Linkee association.

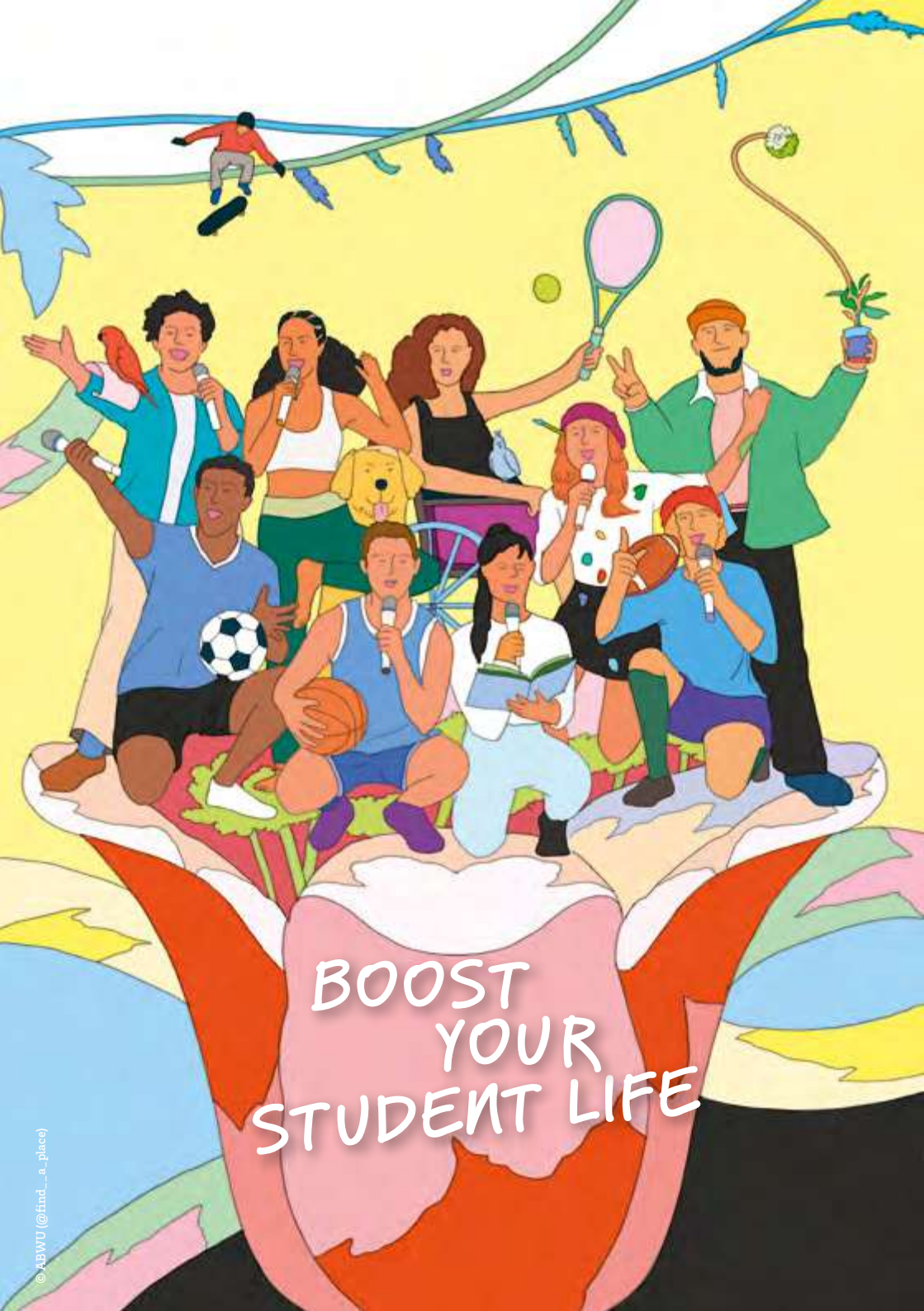
1 EURO MEAL

→ Scholarship holders automatically benefit from this via their Izly account.

SOCIAL GROCERY STORE

The Comptoir d'Aliénor offers food and other products at prices 60% lower than market value. To benefit from this, apply through the Atena Federation to become an association member.





BOOST
YOUR
STUDENT LIFE

CULTURE

The Culture, Art, Science & Society Department invites you to practice, share, try, debate, dare, create, feel... So many opportunities to dive into the diverse and eclectic 2025/2026 cultural season.

A year-round cultural programme

- Enjoy a range of concerts, performances, and artist residencies taking place right on your campus.

Flagship partnerships

- FAB (Festival of the Arts of Bordeaux)
- L'Été Métropolitain
- Chahuts Festival
- The Conservatory
- Agen Fine Arts Museum
- Le Sans Réserve (Périgueux's contemporary music venue – SMAC)

... And many more collaborations that enrich the cultural offering across all the university's campuses and partner territories.

HEUREUX HAZ'ART

→ Participate in "Heureux Haz'art", our student creation festival, every spring.

ON YOUR CAMPUS TOO:

- ✦ **A music studio accessible**
→ from 4pm to 10pm at Station Marne
- ✦ **Pianos available**
→ for free access
- ✦ **A dance studio**
→ available upon reservation
- ✦ **Student associations** leading cultural projects
- ✦ **A culture team available** to support you in developing your projects
- ✦ **A dedicated support system** for student artists through the PHASE service
→ see p.19 for more info

Tailor-made workshops

Free access to a wide range of artistic practices: drawing, choir, theatre, comics, visual arts, public speaking, photography, circus arts, digital practices, creative writing, and more.

These workshops—offered year-round, by semester, or in short formats—are led by professional artists who support and guide you throughout your learning journey.

New for 2025: Les Ondes Vagabondes

A project focused on Charlie Aubry's digital art practices, developed in close collaboration with Zebra3 & Newmimps.

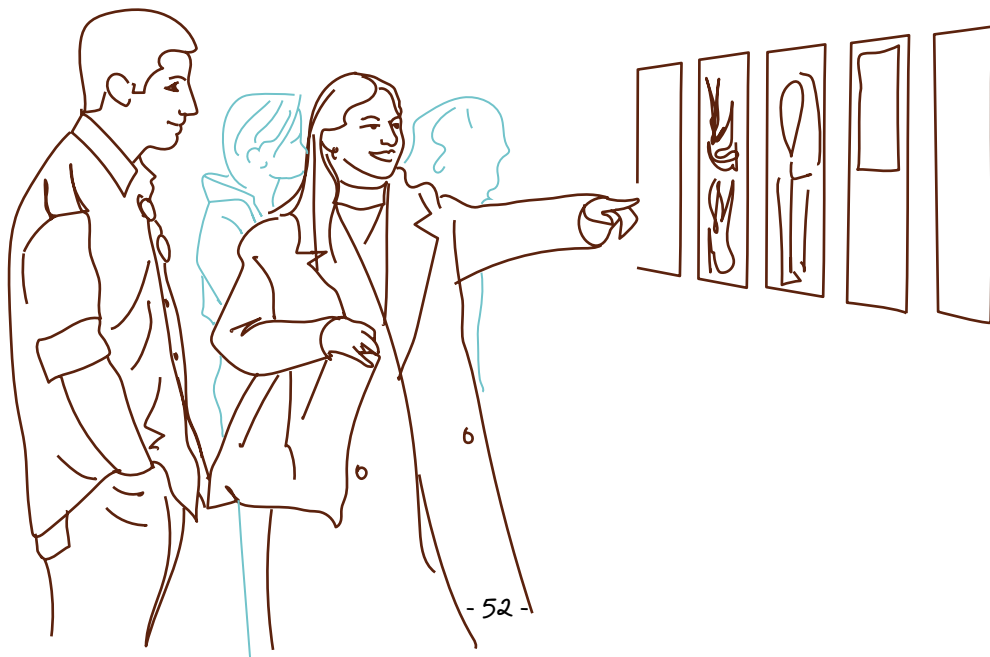
This artist residency, part of the 1% artistique initiative under the Campus 2025 Operation, will travel across the Carreire, Station Marne, Peixotto, and Montesquieu campuses. With its participatory approach, it invites the university community to take part in dedicated creative moments with the artist, who will lead writing and audio recording workshops to help shape the content of his work.

MORE INFO

→ culture@u-bordeaux.fr
→ ma.culture.u-bordeaux.fr

FOLLOW US

→  
CultureUnivBx



OPEN TO THE WORLD

The convergence of arts and sciences: the uniqueness of cultural action.

- A dialogue between science and society guides "**Les Rencards du Savoir**", monthly meetings around the reflections that stir our societies and their issues.
- Dive into the exploration of the university's experimental forest with a series of podcasts, videos, and stories alongside invited researchers and artists.
- Discover numerous projects, notably during the FACTS festival, dedicated to this sometimes surprising encounter between arts and sciences, rich in knowledge, perspectives, and creativity.

Welcome to THE university museum: the MEB

Right in the middle of the Victoire campus, the *Musée d'ethnographie de Bordeaux* (MEB) is home to around 6 000 non-European objects, mainly Asian, collected in the late 19th century. The MEB also houses a collection of 12 000 photographs. It also presents a major themed exhibition each year in its dedicated scenographic space.

Bringing science to everyone

- Created by two researchers from the Bordeaux Astrophysics Laboratory, "**Time Trail**" is two urban hikes that trace the history of the universe from its origins.
- For a different take on the world of science, **the science mediation toy library** offers discovery sessions with free games and an animation team during university events.
- **The European Researchers' Night** takes place every year at Cap Sciences. About a hundred Bordeaux researchers join in to interact with the public through games, conferences, and participatory experiments. Come discover science in a whole new way!

Subscribe to "**Canal SAPS**" (Newsletter about Science with and for society) →





WHEN ART AND SCIENCE INFLUENCE EACH OTHER

The University of Bordeaux organises FACTS (Festival Arts Science Creativity and Technology), a unique event that sparks dialogue between researchers and artists. Through lab residencies, performances, workshops, and installations, FACTS offers a fresh perspective on today's major societal challenges.

The 2025 edition, themed Influence(s), explores how we perceive the world through five transdisciplinary projects, ranging from music to urban wastelands, sociology to oncology.

With FACTS, lecture halls become theatre stages and laboratories turn into creative studios. Whether you're curious, imaginative, or analytical, this festival is the perfect opportunity to discover research in a new light and experience the university as a vibrant cultural space.

→ See you from
November 13th to 16th!

SPORT

Collective action, commitment, solidarity, striving for excellence, and a taste for effort and performance. Or simply leisure, playing with friends, stress relief, relaxation, and well-being.

Sports at the University of Bordeaux encompass all of this, and so much more.

An "à la carte" sports offer

Whether you are an experienced sportswoman or an occasional sportsman, you are spoilt for choice to recharge your batteries or improve your skills in the nearly 50 disciplines on offer.

You can choose between supervised practice (evaluated or not), open practice weightlifting, outings in the great outdoors or free practice alone or with friends.

Want to represent the university?

Podiums await you based on your performance and desires!

Various levels of competitive practice are available to you:

- Academic championships at the regional level, in which teams from the campus sports departments compete
- French and European championships, in which the best athletes from the University of Bordeaux Sports Association (ASUBx) compete.

For more information, visit the sports office on your campus

→ u-bordeaux.fr/en/campus/sports

HIGH-LEVEL PRACTICE

The university favours the dual sporting and academic project of top, very good and good-level athletes
→ u-bordeaux.fr/en/top-level-sports

Please note the registration deadlines: by the end of September of the current year.

FOLLOW US

→  [sport_univbordeaux](https://www.instagram.com/sport_univbordeaux)

PHYSICAL ACTIVITY

If the word "sport" scares you, but you feel the need to move, the university makes it easy for you to engage in physical activity, regardless of your abilities.

Adapted physical activity (APA) at the university

APA supports the resumption or adoption of physical activity tailored to your needs.

It is intended for students who consider themselves sedentary, whether or not they have a physical or mental health condition, chronic or temporary.

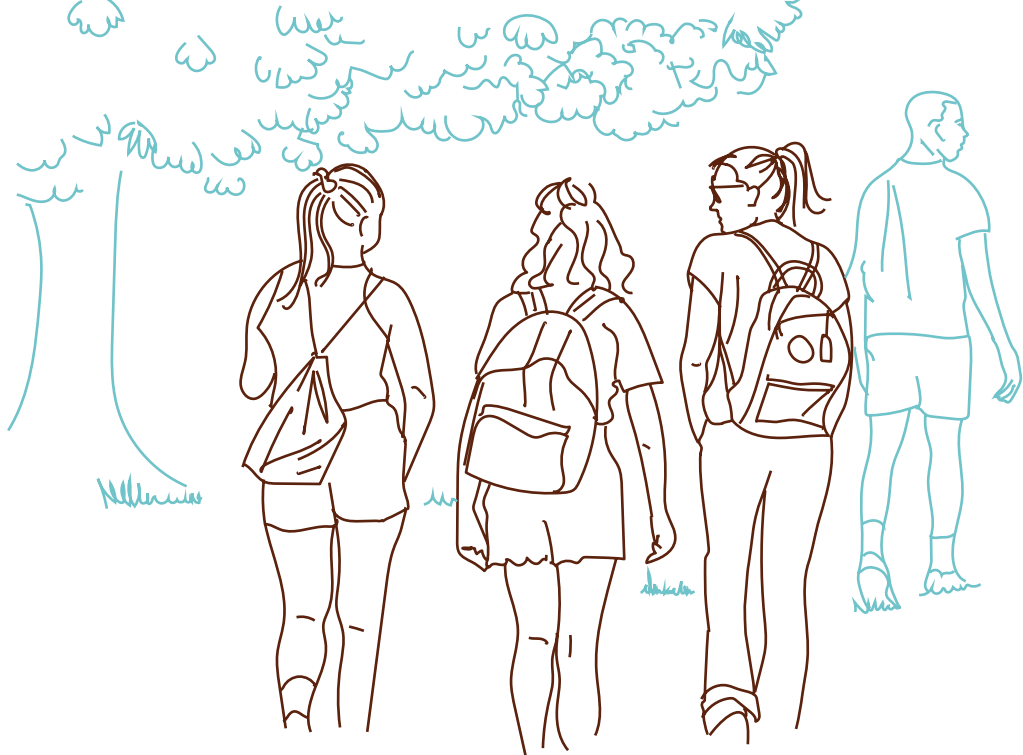
The goals are to improve your well-being, manage symptoms, and (re)discover the joy of being active.

The Feel & Mouv' programme

- > A consultation with a healthcare professional and personalised follow-up at the Student Health Centre
- > Adapted physical activity sessions led by an APA instructor from the university sports service (SUAPS)

To join the programme, book an appointment with a nurse at the Student Health Centre.





Keys to moving more every day

Depending on your preferences, many physical activities without level prerequisites are available to you throughout the year. These include activities such as pilates, yoga, and strength training.

Discover them >



Your campus becomes your playground with Endonora

At the University of Bordeaux, explore new running routes or rediscover your favorite sports from a fresh perspective.

Enjoy a unique sports experience with audio-guided fitness courses starting from 6 university sites. These sessions lead you through brisk walking or running routes and include strength training, mobility, and stretching exercises.

Try the Endonora app >



LIVING ON CAMPUS

Across the university's territory, new spaces dedicated to relaxation, group work, and community life are emerging. Designed with and for students, these welcoming and comfortable areas are tailored to everyday needs.

STUDENT LOUNGE - EVERING

On the Mérignac campus, a room has been entirely redesigned with students to become a warm space for relaxing and studying. Sofas, high tables, beanbags, and a coffee corner: everything you need to recharge between classes.

A21 LOUNGE - PEIXOTTO CAMPUS

On the Peixotto campus, the A21 lounge has been revamped to promote interaction and reduce sedentary habits. With standing tables, microwaves and functional furniture, this lively little spot has become a must-stop between classes.

COMMUNITY HALL - STAPS

In the Cortot building, a real living space is taking shape. Right at the entrance, cozy furnishings set the tone: lounge chairs, outdoor tables, and a foosball table. Soon, the entire ground floor will welcome student associations, a kitchenette, coworking zones and a chill area.

STUDENT LIFE SPACE - ISVV

At the Institute of Vine and Wine Sciences, coworking and relaxation areas have been added to spacious common zones. Alcoves, charging banquettes, foosball... a layout designed to encourage connection, collaboration, and well-earned breaks.

COCOONING SPACES - BU DROIT-LETTRES

At the new Droit-Lettres library in Pessac, the ground floor features a large, modular space perfect for conversations, events, or coffee breaks. Comfortable seating, foldable tables, a furnished terrace, microwaves, and snack machines: everything to slow down and unwind.

STUDENT LOUNGE - DEPARTMENT OF PHYSICAL MEASUREMENTS

On the Gradignan campus, the student lounge at the Department of Physical Measurements has been fully renovated. Bigger, better equipped, and more comfortable, this space now fosters everyday well-being and connection.

These new spaces aim to mix uses and audiences while expanding the range of services available to students on campus.

STATION MARNE

4 100 m² dedicated to education, cultural life and student activities:

- ✦ The Student Life Centre (BVE), a point of contact and information for campus life, housing, and daily life
- ✦ A digital library with mediation and learning spaces, as well as individual or group study rooms that can be reserved through the ENT. Access collections from other university libraries via connected lockers.
- ✦ A 400-seat auditorium for live performances and teaching
- ✦ Areas for socialising and student cultural life
- ✦ A music studio
- ✦ Student associations from the Victoire campus
- ✦ Two fitness and sports areas

→ 16-22,
Cours de la Marne
33000 Bordeaux,
→ Open Monday to Friday,
9am - 5pm

CARREIRE CAMPUS STUDENT LIFE HUB

Located at the campus entrance, this new building includes:

- ✦ Sports facilities for students and staff, with student associations and a sports office
- ✦ Workshops offered by the cultural department
- ✦ A coworking space
- ✦ Dining areas open from 12pm to 2pm with microwave access
- ✦ A multipurpose room with a games library
- ✦ An 18-seat meeting room
- ✦ A piano available for everyone
- ✦ A foosball table!

Reservations can be made by email at
→ secbve.bordeaux@u-bordeaux.fr



GOT
QUESTIONS?

THEY'VE
GOT
ANSWERS!

AT YOUR ARRIVAL

Student Life Centres

The Student Life Centres welcome all Bachelor, Master and Doctorate students.

They offer social support and are the gateway to student associations. They also organise numerous cultural, sports and integration activities.

FOLLOW US

→  [bveunivbordeaux](https://www.instagram.com/bveunivbordeaux)

> Peixotto and Bordes Campus (Talence)

bve.talence@u-bordeaux.fr
05 40 00 84 84

> Campus Victoire (Bordeaux)

accueilbve.victoire@u-bordeaux.fr
05 57 57 19 56

> Campus Carreire (Bordeaux)

accueilbve.carreire@u-bordeaux.fr
05 57 57 10 50

> Campus Montesquieu (Pessac)

bve.pessac@u-bordeaux.fr
05 56 84 62 61

International office

For international students (Bachelor, Master) within an exchange programme.

* Peixotto and Bordes Campus (Talence)

- > Science and Technology
- > IUT de Bordeaux: Science and Technology
- > Institute of Vine and Wine Sciences (ISVV)
- > Evering Institute - Mérignac

→ Anna Gerykova: incoming-talence@u-bordeaux.fr
05 40 00 83 33 / 05 40 00 28 53

* Victoire and Carreire Campus (Bordeaux)

- > Health Sciences & ISPED
- > Human Sciences
- > STAPS
- > INSPE: School of Education

→ Pauline Carreau, Inchirah Mousset:
incoming-carreire@u-bordeaux.fr
05 57 57 13 01 / 05 57 57 46 77

* Montesquieu Campus (Pessac)

- > Law, Political Science, Economics, Management
- > IUT de Bordeaux: Management
- > IUT d'Agen or Périgueux

→ Marine Moncaut, Anna Seran:
incoming-pessac@u-bordeaux.fr
05 56 84 86 39 / 05 56 84 29 67

For PhD students only

× Graduate research school

Registration, changes that may occur during the PhD programme, examination procedures, awarding of the PhD degree, recruitment processes within the doctoral schools, etc.

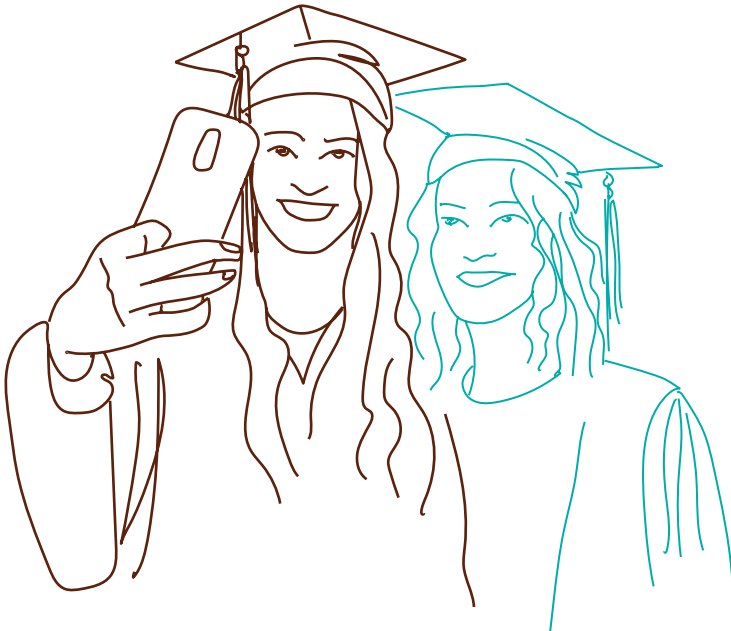
351, cours de la Libération
33400 Talence - Building A33, 1st floor

→ doctorat.u-bordeaux.fr/en

× Welcome Centre for International Researchers

This centre provides support and advice for those at Doctorate level and above (PhD students, post doctorate students, visiting professors etc.).

→ accueil.chercheurs@u-bordeaux.fr
05 40 00 68 73



YOUR MUST-HAVES

Student Health Centre

22 avenue Pey Berland - Pessac

→ 05 33 51 42 00

Tram B, Doyen Brus. Monday to Thursday, from 9 am to 7 pm, Friday from 9 am to 5 pm

→ sante-etudiants-bdx.fr

Make an appointment:

→ Doctolib/Espace Santé Etudiants Pessac

Crous social service

→ 05 56 33 96 15

service.social@crous-bordeaux.fr

From 8:30am to 12:30pm and from 1:30pm to 4:30pm

Make an appointment:

→ crous-bordeaux.fr/social/prendre-rendez-vous

Career Guidance Centre

Campus Victoire,
Building F, 1st floor

Open with or without an appointment:
Mondays, Tuesdays and Thursdays from 1 pm to 5:30 pm, Wednesday from 9 am to 5:30 pm

→ 05 57 57 18 04

orientation.carrieres@u-bordeaux.fr

Student vice-president

Mickaël Larivière

→ vpe@u-bordeaux.fr

Ambassadors for Transitions

→ transitions@u-bordeaux.fr

→ ambassadeur.icestransitions

Student Life Centres

Your campus life experts.

Building F, 1st floor

Open with or without appointment:
Monday, Tuesday & Thursday from 1:00 pm to 5:30 pm

Wednesday from 9:00 am to 5:30 pm

Sport facilities

* Sports Hall - Monadey campus

Monday to Thursday 9 am - 12 am
/ 1 pm - 3 pm, Friday 9 am - 12 am

Allée Pierre de Coubertin
33400 Talence

→ 05 40 00 27 38

→ 05 40 00 27 39

* Life hub – Carreire campus

Monday to Friday 8 am - 4pm

146 rue Léo Saignat
33000 Bordeaux

→ 05 57 57 14 03

* COSEC (Indoor Sports Complex) – Rocquencourt campus

Monday to Thursday 9 am - 12 pm / 1 pm - 3 pm, Friday 9 am - 12 pm

Domaine de Rocquencourt,
avenue Jean Babin 33600 Pessac

→ 05 40 00 66 70

→ 06 82 04 37 23

ALL YOUR CONTACTS

CARREIRE CAMPUS (BORDEAUX)

Espace 5 D

- × Health College
→ assistance.college.sante@u-bordeaux.fr
- × Student life centre
→ 05 57 57 10 50
accueilbve.carreire@u-bordeaux.fr
- × Student vice-president at the campus life council
→ vpe.bordeaux@u-bordeaux.fr
- × PHASE service / specific needs
→ 05 57 57 56 84
anna.dory-larrazet@u-bordeaux.fr
- × Service culture
→ 05 47 30 42 96
culture-bordeaux@u-bordeaux.fr

PCSI (Fire and rescue centre)

> Carreire

05 57 57 14 50 (24/7)

pcsi.carreire@u-bordeaux.fr

Carreire campus life hub

- × Multipurpose room, meeting room, and coworking space available for reservation
→ secbve@u-bordeaux.fr
- × Sports
→ 05 57 57 14 03
sport-sante@u-bordeaux.fr

Administration (1st floor)

- × International office
→ 05 57 57 13 01
outgoing-carreire@u-bordeaux.fr (outgoing students)
incoming-carreire@u-bordeaux.fr (incoming students)

Building ED

- × Language centre
→ 05 57 57 95 33

Building Faculty of Pharmacy

- × Doctoral school Health and Life Sciences
→ ed-svs@u-bordeaux.fr

VICTOIRE CAMPUS (BORDEAUX)

Station Marne

- × Student life centre
→ 05 57 57 19 56
accueilbve.victoire@u-bordeaux.fr
- × Student vice-president at the campus life council
→ vpe.victoire@u-bordeaux.fr
- × Sports
→ 05 57 57 56 53
sport-sh@u-bordeaux.fr
- × Service culture
→ 05 57 57 19 96
culture-bordeaux@u-bordeaux.fr

Building G

- × Doctoral school Society, Politics, Public Health
→ edsp2@u-bordeaux.fr

PCSI (Fire and rescue centre)

>Victoire

05 57 57 30 50

psi.victoire@u-bordeaux.fr

Court Leyteire

- × PHASE service / specific needs
→ 05 57 57 18 48
caroline.simonpietri@u-bordeaux.fr
- × Language centre
→ 05 57 57 18 86
espacelanguages.victoire@u-bordeaux.fr

Cour d'honneur

- × Student Office – College of Human Sciences
→ scolarite.sciences-homme@u-bordeaux.fr
- × International office
Courtyard – building O
→ 05 57 57 13 01
outgoing-carreire@u-bordeaux.fr (outgoing students)
incoming-carreire@u-bordeaux.fr (incoming students)

MONTESQUIEU CAMPUS (PESSAC)

Building

- × Sports
→ 05 56 84 85 17
sport-dspeg@u-bordeaux.fr

Building B

- × Doctoral School Law
→ ed-droit@u-bordeaux.fr
- × Doctoral school Economic Sciences, Management and Demography
→ ed-ecoges@u-bordeaux.fr
- × Student life centre
→ 05 56 84 62 61
bve.pessac@u-bordeaux.fr
- × Student vice-president at the campus life council
→ vpe.pessac@u-bordeaux.fr
- × PHASE service / specific needs
→ phase.pessac@u-bordeaux.fr
05 56 84 29 28 / 85 08

- × International office
→ 05 56 84 86 39
outgoing-pessac@u-bordeaux.fr
(outgoing students)
incoming-pessac@u-bordeaux.fr
(incoming students)

- × Culture
→ 05 56 84 25 59
culture-pessac@u-bordeaux.fr

Building B (Entrance F)

- × Language centre
Bât. F, 2^e étage

Building H

- × Law, Political sciences, Economics and Management College
→ assistance.iaweb.dspeg@u-bordeaux.fr

> PCSI (Fire and rescue centre)

> Montesquieu

05 56 84 29 88

cto.pcsi@u-bordeaux.fr

PEIXOTTO & BORDES CAMPUS (TALENCE)

Building A1

- × Doctoral school Physics and Engineering
→ edoc.spi@u-bordeaux.fr

Building A 10

- × Doctoral school Chemical Sciences
→ secretariat-edsc@u-bordeaux.fr

Building A22

- × Science and technologies College
→ Inscription.administrative.tec@u-bordeaux.fr
- × Student life centre
→ 05 40 00 84 84
bve.talence@u-bordeaux.fr

- × Service PHASE – Profils
PHASE Service / specific needs /
Undergraduate / DAEUB /
Preparatory class
→ 05 40 00 35 59
anouk.souffanian@u-bordeaux.fr
- > Graduate
→ 05 40 00 30 83
denis.clanet@u-bordeaux.fr

- × Sports
→ 05 40 00 63 69
sport-st@u-bordeaux.fr

Building A21

- × Student vice-president
at the campus life council
→ vpe.talence@u-bordeaux.fr
- × Culture
→ 05 40 00 24 75
culture-talence@u-bordeaux.fr

> PCSI (Fire and rescue
centre)

> Peixotto

05 40 00 89 79 (24/7)

pcsi.talence@u-bordeaux.fr

- × Language centre
→ 05 40 00 29 78
dflc-st@u-bordeaux.fr

Building A30 - LaBRI

- × Doctoral school Mathematics
and Computer Science
→ edmi@u-bordeaux.fr

Building A33

- × Graduate Research School
→ 05 40 00 24 46
direction.
collegeED@u-bordeaux.fr

Bonnefont Castle (A37)

- × International office
→ 05 40 00 83 33
outgoing-talence@u-bordeaux.
fr (outgoing students)
incoming-talence@u-bordeaux.
fr (incoming students)

Building B5

- × Doctoral school Sciences
and Environments
→ edoc.se@u-bordeaux.fr

OTHER CAMPUSES

Tuition

- × ISVV
→ isvv-scolarite@u-bordeaux.fr
- × INSPE
→ assistance.iaweb@inspe-
aquitaine.fr

- × IUT Bordeaux Bastide
→ 05 56 00 95 54
fvu-bastide@iut.u-bordeaux.fr
- × IUT Gradignan
→ 05 56 84 57 20
fvu-gradignan@iut.u-
bordeaux.fr

International office

- × IUT Bastide
→ 05 56 84 86 39
outgoing-pessac@u-bordeaux.fr
(outgoing students)
incoming-pessac@u-bordeaux.fr
(incoming students)
- × INSPE
→ 05 57 57 13 01
outgoing-carreire@u-bordeaux.fr
(outgoing students)
incoming-carreire@u-bordeaux.fr
(incoming students)
- × UF biologie, ISVV, IUT Gradignan
→ 05 40 00 83 33
outgoing-talence@u-bordeaux.fr
(outgoing students)
incoming-talence@u-bordeaux.fr
(incoming students)

PHASE service / specific needs

- × ISVV and INSPE
→ 05 40 00 30 83
denis.clanet@u-bordeaux.fr

AGEN CAMPUS

Tuition IUT de Bordeaux

→ frv-agen@iut.u-bordeaux.fr

International office

- × BUT GACO
→ outgoing-pessac@u-bordeaux.fr
(outgoing students)
- × BUT QLIO
→ outgoing-talence@u-bordeaux.fr
(incoming students)

- × STAPS
→ 05 56 84 52 40
julie.cornaton@u-bordeaux.fr
- × IUT de Bordeaux
→ 05 56 84 58 92
fabienne.eydon@u-bordeaux.fr

Sports

- × IUT de Bordeaux,
site de Gradignan
15 rue Naudet - Gradignan
→ 05 56 84 57 38
sports@iut.u-bordeaux.fr
- × INSPE
→ 05 56 17 34 00
pascal.grassetie@u-bordeaux.fr
- × IUT de Bordeaux site Bastide, pôle
universitaire de sciences de
gestion
→ 05 56 84 85 17
- × ISVV
Bât A21 – campus Talence
→ 05 40 00 63 69
sport-st@u-bordeaux.fr

PHASE service / specific needs

→ phase@u-bordeaux.fr

- × IUT de Bordeaux
→ 05 56 84 58 92
- × DUSA → 05 40 00 35 59
- × INSPE → 05 40 00 30 83
- × IDE → 05 56 84 29 28

Student life centre

- × IUT de Bordeaux et DUSA
→ 05 40 00 84 84
bve.talence@u-bordeaux.fr
- × DEJA
→ 05 56 84 62 61
bve.pessac@u-bordeaux.fr

Culture

- 05 56 84 25 59
culture-pessac@u-bordeaux.fr

Sports

- Responsable: Hervé Teissier
→ 06 87 83 54 36
herve.teissier@u-bordeaux.fr

Campus nurse

- × Site du Pin
→ 05 53 77 57 07
- × Site Michel Serres
→ 05 53 48 06 40

PERIGORD CAMPUS

Tuition IUT de Bordeaux

- 05 53 02 58 54
fvu-perigueux@iut.u-bordeaux.fr

International office

- × BUT CTC
→ outgoing-pessac@u-bordeaux.fr (outgoing students)
→ incoming-pessac@u-bordeaux.fr (incoming students)
- × BUT GCGB
→ outgoing-talence@u-bordeaux.fr (outgoing students)
→ incoming-talence@u-bordeaux.fr (incoming students)

Student life centre

- 05 56 84 62 61
bve.pessac@u-bordeaux.fr

PHASE service / specific needs

- phase@u-bordeaux.fr
- × IUT de Bordeaux → 05 56 84 58 92
- × IDE → 05 56 84 85 08
- × INSPE → 05 40 00 30 83

Culture

- 05 56 84 25 59
culture-pessac@u-bordeaux.fr

Sports

- Responsable: Marc Gabaud
→ 05 53 02 58 52
marc.gabaud@u-bordeaux.fr

Campus nurse

- Périgord Campus
→ 05 53 02 60 94
→ 06 24 61 41 69

UNIVERSITY RESTAURANTS

BON APPÉTIT !

You'll find university restaurants offering complete and balanced meals on all campuses as well as in the city centre. Your Aquipass card allows you to pay for meals, snacks, or drinks at all university restaurants and cafeterias.

**FOR OPENING
HOURS**

→ crous-bordeaux.fr

Bordeaux Campus and Bordeaux-Bastide Campus

- × Le 98 - Crous Cafet' + Crous Market'
98 quai des Chartrons
- × La Bastide - Resto U' + Crous Market'
15 avenue Abadie
- × Le Capu - Resto U'
16 rue Jules Guesde
- × Le Musée - Crous Market'
Place de la Victoire

Carreire Campus (Bordeaux)

- × Le Mascaret - Resto U' + Crous Market'
146 rue Léo Saignat

Peixotto Campus (Talence)

- × La Soucoupe - Crous Market'
A22

Montesquieu Campus (Pessac)

- × (S)pace' Campus - Resto U' + Crous Market' + Crous & Go' + Crous Relax'
18 avenue de Bardanac
- × Le Crous Moovy Market'
23 esplanade des Antilles
- × Le Forum - Crous Cafet' + Crous Market'
2 avenue Léon Duguit
- × L'IEP - Crous Cafet'
11 allée Ausonne
- × Resto U' n°2 + Crous Market'
Avenue des Facultés
- × Le Sirtaki - Crous Cafet'
Esplanade des Antilles
- × Le Veracruz - Crous Cafet'
Avenue Maine de Biran

PRACTICAL INFORMATION

Emergency numbers

- x SAMU → 15
- x Firefighters → 18 ou 112
- x Police → 17
- x SOS Médecins → 05 56 44 74 74 ou 3624
- x Anti poison centre → 05 56 96 40 80
- x Social emergencies → 115
- x SOS friendship → 05 56 44 22 22
- x SOS suffering → 05 56 67 00 71
- x SOS post abortion → 0 825 33 18 19
- x SOS sexual violence → 3919
- x Suicide listening service 24/7 → 3114
- x Victim support service → 05 56 01 28 69
- x Emergency welcome centre for victims of violence → 05 56 79 87 77
- x Bordeaux police station → 05 57 85 77 77
- x Talence police station → 05 57 35 77 22
- x Pessac police station → 05 57 26 38 70)

University of Bordeaux emergency numbers

- x Talence / Pessac → 05 40 00 89 79
- x Victoire → 05 57 57 30 50
- x Carreire → 05 57 57 14 50

Pharmacies open 24/7

- x Pharmacie des Capucins → 30 place des Capucins 33000 Bordeaux
- x Pharmacie des Grands Hommes → 1 place des Grands Hommes 33000 Bordeaux
- x Nearest on-call pharmacy → 32 37

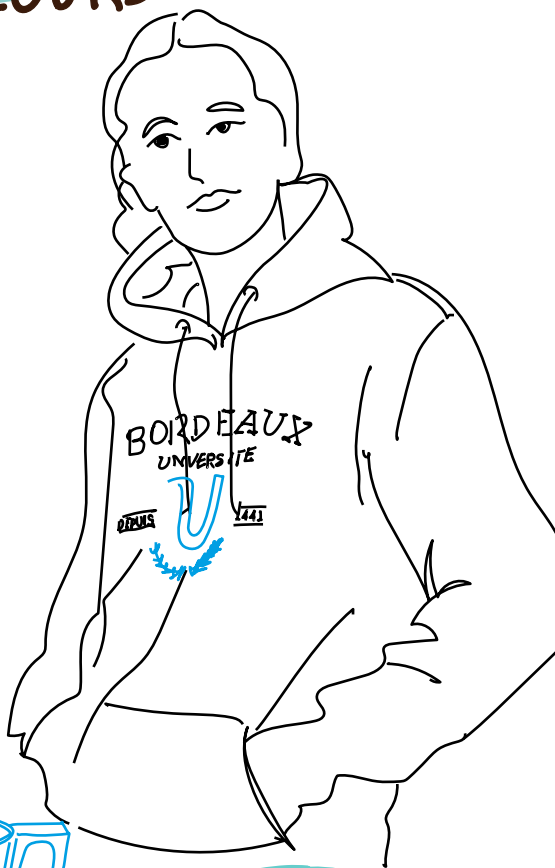
FRENCH NATIONAL HOLIDAYS

- | | | | |
|---|--|--|---|
| → Halloween:
1 st November
2024 | → Christmas:
25 th December | → Worker's
Holiday: 1 st May | → Whit
Monday:
25 th May |
| → 1918
Remembrance
Day: 11 th
November | → New Year's
Day: 1 st January | → 1945
Victory:
8 th May | → National
Holiday:
14 th July |
| | → Easter
Monday: 6 th
April | → Feast of the
Ascension: 14 th
May | → Assumption:
15 th August |

HOIST THE COLOURS HIGH!

Want to proudly display the university's colours? Head over to our shop to perfect your outfit!

DISCOVER
OUR COLLECTION!



What else?



To rock
your style!



Brighten up
your potential!





ORDER WITH CLICK & COLLECT

Can't wait to put on your new tee? No worries! Our shop offers a Click & Collect system:

- > Select your pickup point
- > Fill out an order form
- > Pay online
- > Pick up your goods at one of our Student Life Centres (BVE)

Everything's in the bag!



TO ORDER,
VISIT:

→ [u-bordeaux.fr/
campus/boutique](https://u-bordeaux.fr/campus/boutique)



Stay hydrated
anytime!

CAMPUSES & SITES

BORDEAUX CAUDÉRAN

› National Higher Institute for Teaching and Education (INSPE)



MÉRIGNAC

› National Higher Institute for Teaching and Education (INSPE)



BORDEAUX Carreire Campus

› College of Health Sciences



MÉRIGNAC

› Evering Institute: Aeronautical Engineering



CAMPUSES IN THE NOUVELLE-AQUITAINE REGION



PESSAC Montesquieu Campus

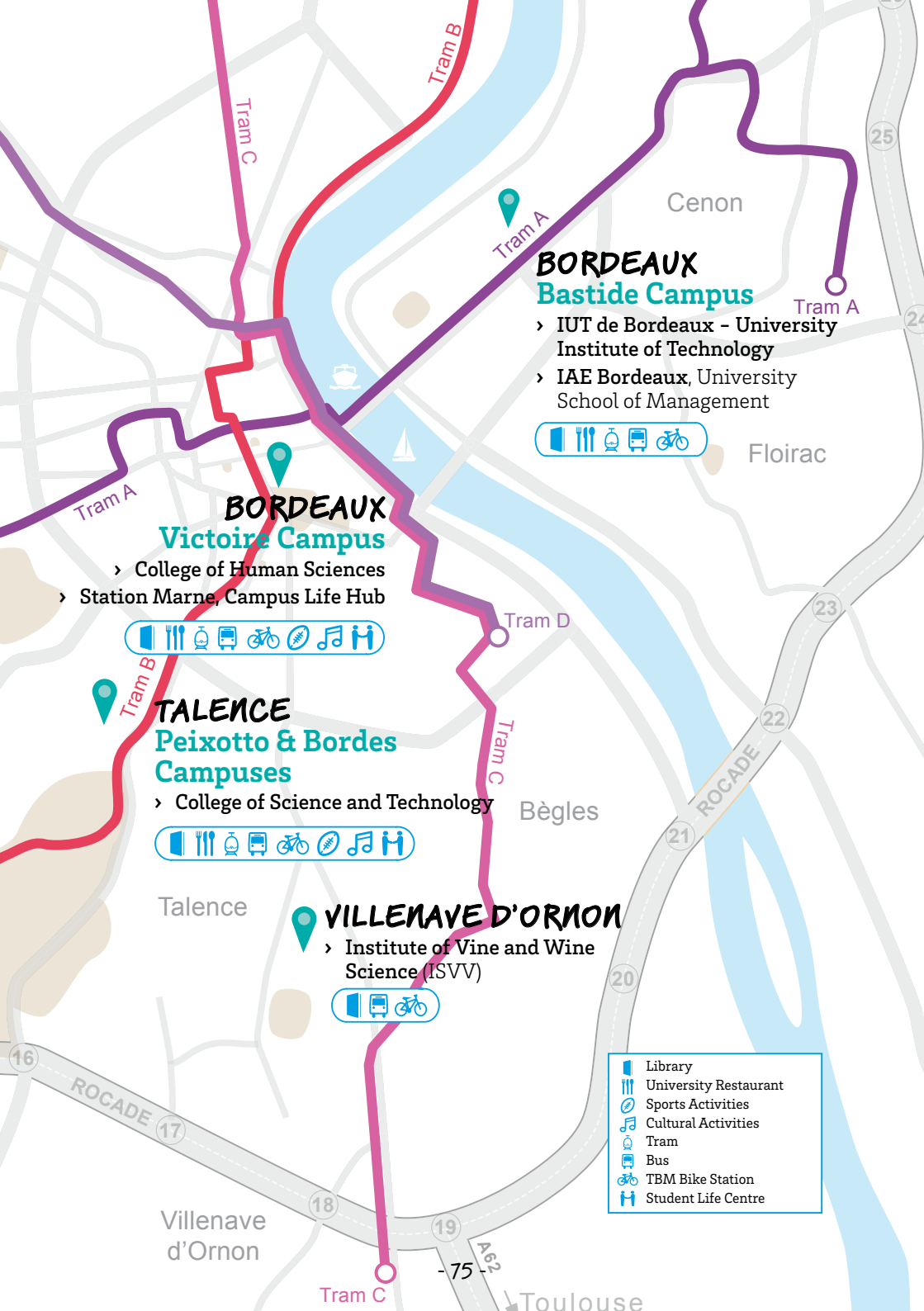
› College of Law, Political Science, Economics and Management
› Faculty of Sports Science and Physical Education (STAPS)
› Student Health Centre



GRADIGNAN

› IUT de Bordeaux - University Institute of Technology





BORDEAUX Bastide Campus

- › IUT de Bordeaux - University Institute of Technology
- › IAE Bordeaux, University School of Management



BORDEAUX Victoire Campus

- › College of Human Sciences
- › Station Marne, Campus Life Hub



TALENCE Peixotto & Bordes Campuses

- › College of Science and Technology



VILLENAVE D'ORNON

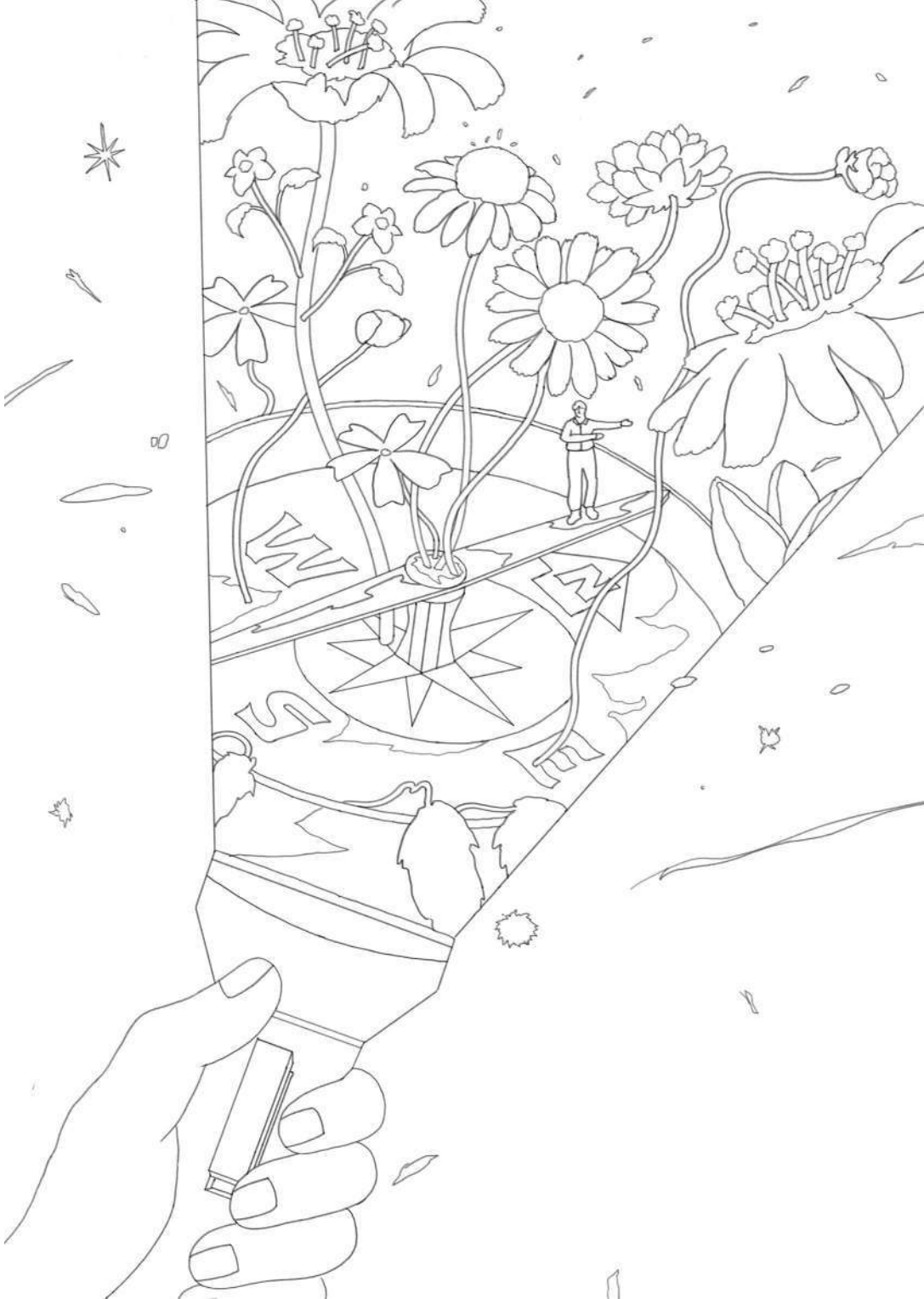
- › Institute of Vine and Wine Science (ISVV)

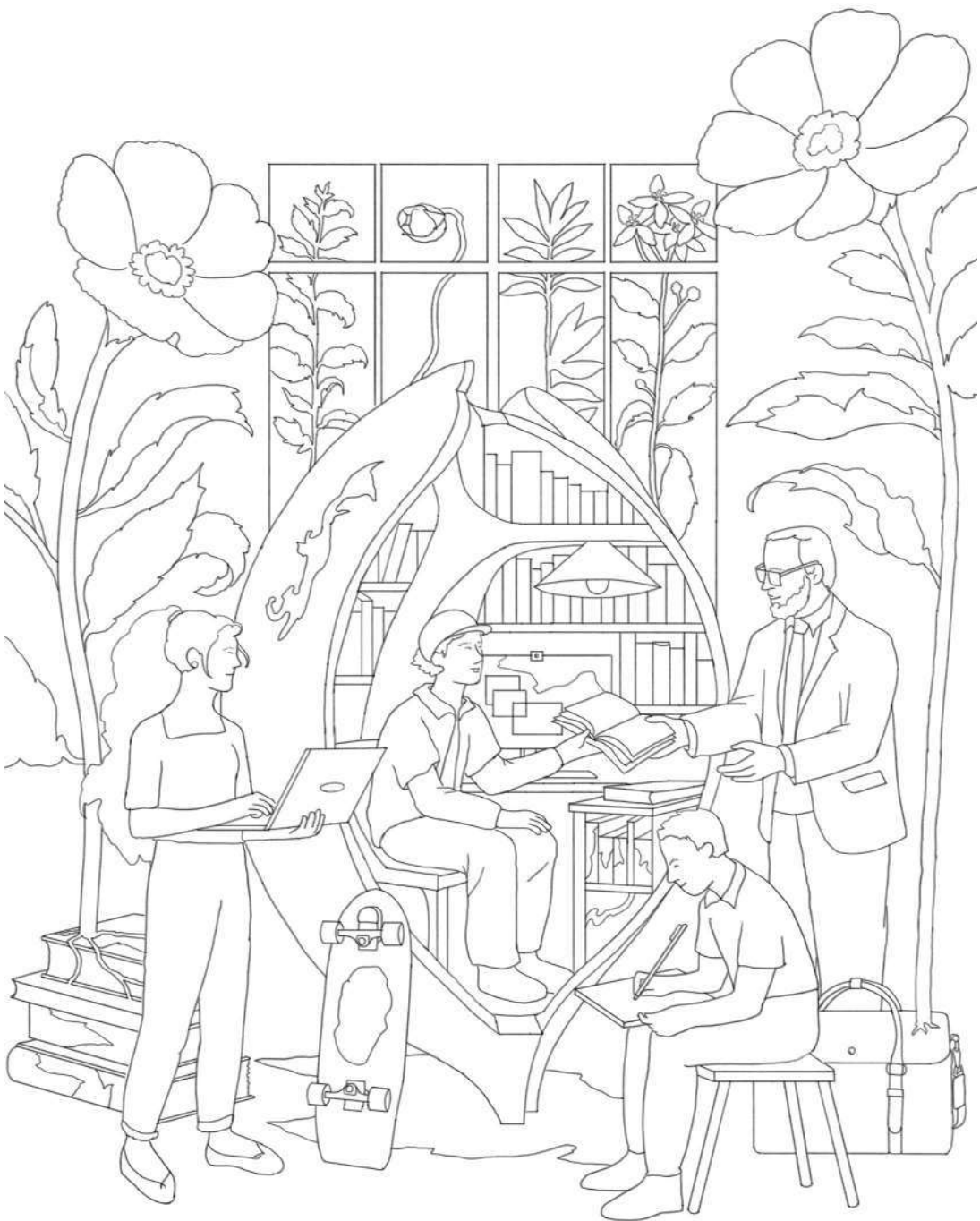


- Library
- University Restaurant
- Sports Activities
- Cultural Activities
- Tram
- Bus
- TBM Bike Station
- Student Life Centre

















Université de Bordeaux
351 cours de la Libération
33405 Talence Cedex

To learn more

u-bordeaux.fr/en



univbordeaux



universitedebordeaux



ubordeaux